


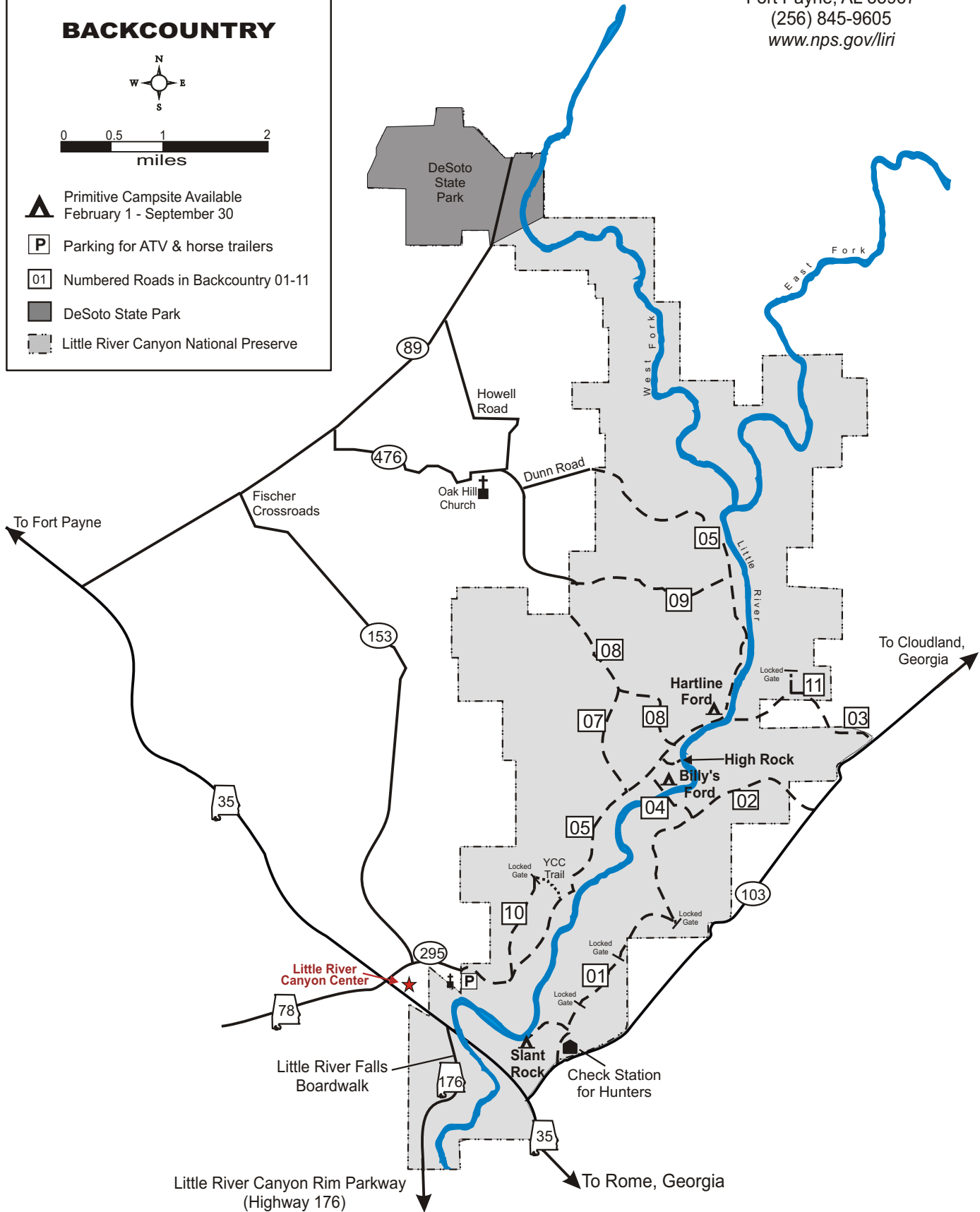
Little River Canyon National Preserve

BACKCOUNTRY



-  Primitive Campsite Available
February 1 - September 30
-  Parking for ATV & horse trailers
-  Numbered Roads in Backcountry 01-11
-  DeSoto State Park
-  Little River Canyon National Preserve

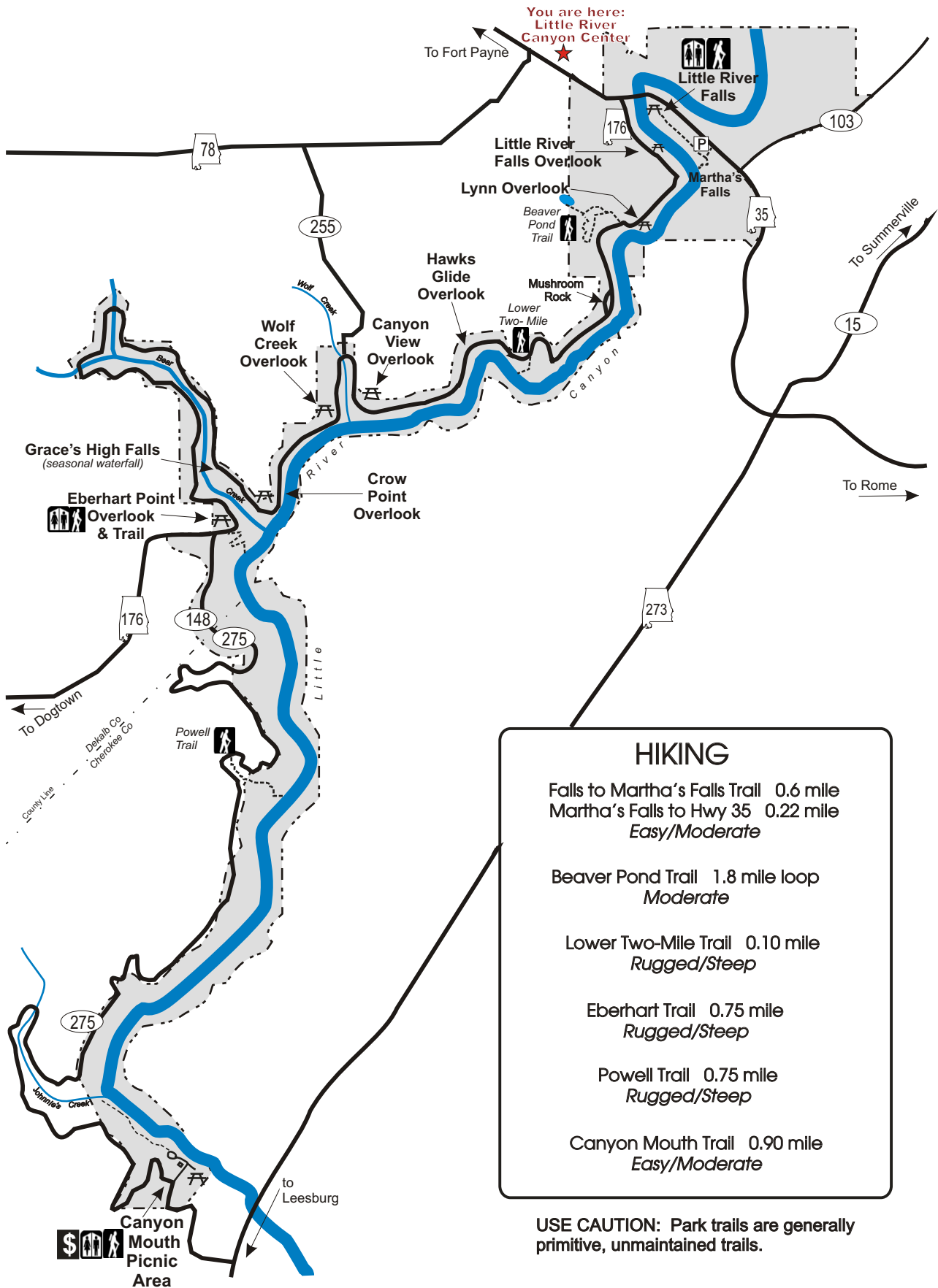
For more information:
 Little River Canyon National Preserve
 4322 Little River Trail NE, Suite 100
 Fort Payne, AL 35967
 (256) 845-9605
www.nps.gov/liri



Little River Canyon Rim Parkway
(Highway 176)

Little River Canyon National Preserve

SCENIC DRIVE



HIKING

- Falls to Martha's Falls Trail 0.6 mile
Martha's Falls to Hwy 35 0.22 mile
Easy/Moderate
- Beaver Pond Trail 1.8 mile loop
Moderate
- Lower Two-Mile Trail 0.10 mile
Rugged/Steep
- Eberhart Trail 0.75 mile
Rugged/Steep
- Powell Trail 0.75 mile
Rugged/Steep
- Canyon Mouth Trail 0.90 mile
Easy/Moderate

USE CAUTION: Park trails are generally primitive, unmaintained trails.