



## General Management Plan Amendment

### Dear Friends of Lake Clark:

Lake Clark National Park and Preserve is one of Alaska's premiere national parks, including 4 million acres of free-flowing rivers, glaciated valleys, and rugged peaks spanning the Alaska Range from Cook Inlet to the Bristol Bay region. Since Lake Clark was established in 1980, the National Park Service (NPS) has worked to protect the area and provide opportunities for residents and visitors to enjoy this special landscape.

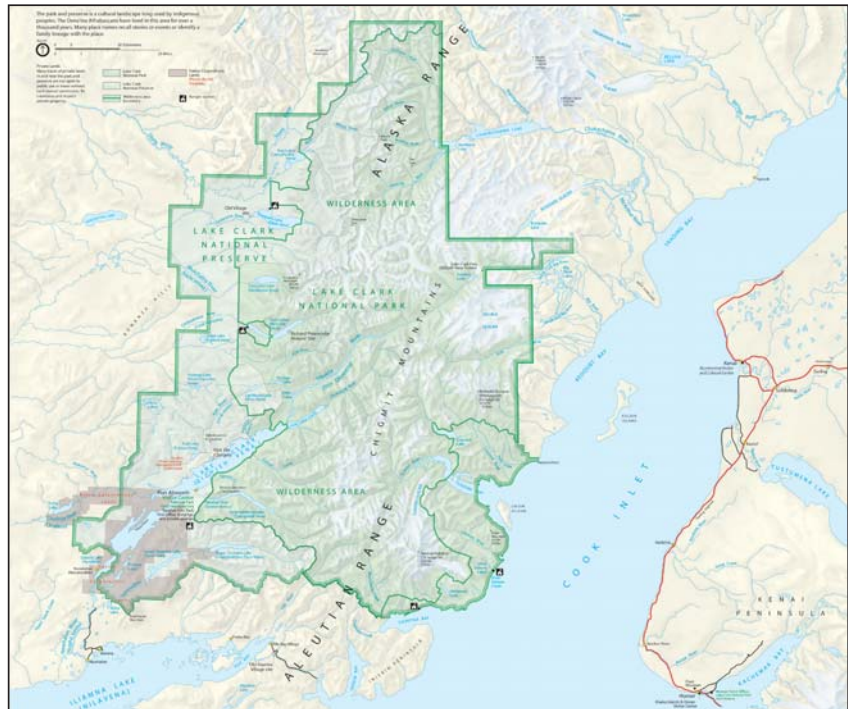
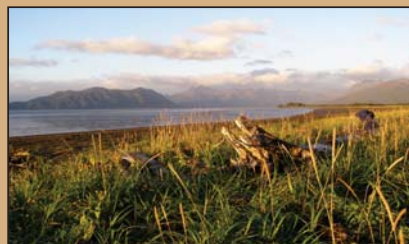
We need your help. This summer a NPS planning team is beginning to work on an amendment to the park's 26-year-old general management plan. This plan will guide management decisions and provide an overarching vision for resource protection and visitor use that will best achieve the National Park Service's mandate to preserve resources unimpaired for the enjoyment of future generations.

We invite your participation in this planning effort. Sharing your ideas and concerns for management of Lake Clark National Park and Preserve will strengthen the planning process and help us make the best decisions for the park. If you live in the area, please come to one of the open houses we will be holding this summer where you can learn more about the planning process, meet the planning team, and share your views on the future of the park. If not, please share your comments electronically or by mail.

I appreciate your interest in Lake Clark National Park and Preserve and look forward to working together to chart the future of this spectacular place.

Sincerely,

Joel L. Hard  
Superintendent  
Lake Clark National Park and Preserve



### How to Get Involved

We need to hear your ideas and concerns for managing the park! Comments can be sent by mail, shared at an open house, or submitted electronically (email address listed below). Please consider the questions listed on the enclosed comment form in addition to any other thoughts and ideas. Receiving your input before September 1, 2011, will allow us to incorporate your ideas early in the planning process. Thank you.

#### Share your comments electronically:

Complete the electronic version of the comment form on the web at <http://parkplanning.nps.gov/lac> (click on "General Management Plan - Lake Clark National Park and Preserve" and then "Open for Public Comment").

#### Share your comments at an open house:

You can provide your comments (verbally or in writing) at the upcoming open houses. We invite you to attend one of the open house or village meetings to talk with the planning team firsthand about your ideas, experiences, and questions. The open house schedule is listed on the back.

Mail your comment form or letters to:  
Lake Clark National Park and Preserve - GMP Amendment  
240 W. 5th Ave, Suite 236  
Anchorage, AK 99501

Email your input to:  
[LACL\\_Planning@nps.gov](mailto:LACL_Planning@nps.gov)

## Park Purpose

The purpose of Lake Clark National Park and Preserve, as stated in the 2009 Foundation Statement is:

*Lake Clark National Park and Preserve was set aside to preserve unimpaired a region of dynamic geologic and ecological processes that create scenic mountain landscapes, unaltered watersheds supporting Bristol Bay red salmon, and habitats for wilderness dependent populations of fish and wildlife, vital to 10,000 years of human history.*

The foundation also identified the most significant resources and values of the park (see right).

## What is a General Management Plan?

The General Management Plan is the basic foundation for decision making and detailed planning for Lake Clark National Park and Preserve. The plan provides a vision for resource preservation and visitor use during the next 15 to 20 years. We will coordinate with the public, other land managers, and neighboring communities to ensure that management decisions continue to preserve the park's natural and cultural resources, protect subsistence resources, and provide opportunities for quality visitor experiences.

The staff at Lake Clark are interested in hearing from you on topics such as:

- Why Lake Clark is important to you.
- Appropriate levels of development necessary to support visitor use (for example, trails, cabins, campgrounds).
- Management of commercial services.
- Strategies to protect the things that are most important about the park such as wild rivers.
- Evaluating areas of the park and preserve for possible inclusion in the national wilderness preservation system.
- Identifying how to address threats to the park that have arisen since 1984.

## Significance of the Park



mountain landscapes



mosaic of landscapes & ecosystems



salmon fishery



fish and wildlife populations & habitats



cultural tapestry



subsistence



wilderness

## Please join us at an Open House!

This summer, the park will host meetings with the public to hear your ideas, concerns, and thoughts that the planning team could consider as they amend the 1984 management plan. Open houses will be held in Anchorage, Soldotna, and Homer, Alaska. In addition, park staff will visit local communities in the region to hear the ideas and concerns of local residents.

### OPEN HOUSE:

Tuesday July 12, 2011, 4:00pm to 7:00pm  
Alaska Islands and Ocean Visitor Center  
95 Sterling Highway  
Homer, AK 99603  
907-235-6961

Wednesday July 13, 2011, 4:00pm to 7:00pm  
Donald E. Gilman River Center  
514 Funny River Road  
Soldotna, AK 99669  
907-260-4882

Thursday July 14, 2011, 4:00pm to 7:00pm  
Shepton Anchorage Hotel & Spa, Susitna Room  
401 East 6th Ave  
Anchorage, AK 99501  
907-276-8700

### LOCAL VISITS:

Tuesday July 26, 2011, 4:00pm to 7:00pm  
Community Building  
Nondalton, Alaska

Wednesday July 27, 2011, 4:00pm to 7:00pm  
Community Building  
Pedro Bay, Alaska

Thursday July 28, 2011, 4:00pm to 7:00pm  
Lake Clark National Park & Preserve Visitor Center  
Port Alsworth, Alaska

Friday July 29, 2011, 4:00pm to 7:00pm  
Iliamna Community Building  
Iliamna and Newhalen, Alaska



PENALTY FOR PRIVATE USE \$300

OFFICIAL BUSINESS

240 W. 5th Ave., Suite 236  
Anchorage, AK 99501

Lake Clark National Park and Preserve  
GMP Amendment