



The Klondike Gold Rush of 1898

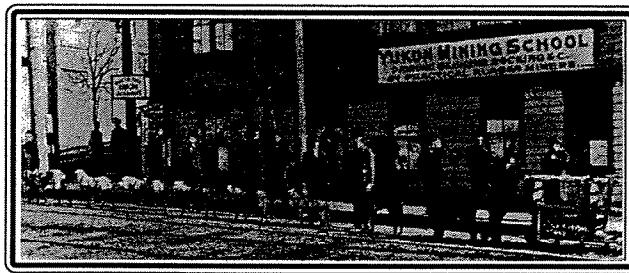
A Resource Guide
to
"The Last Grand
Adventure"



Klondike Gold Rush
National Historical Park
Seattle, Washington

CONTENTS

1 The National Park System.....	1
2 The Era of the Gold Rush	3
3 The United States in 1897	4
4 The Journey North	8
5 Gold! Gold! Gold!	14
6 The Klondike Legacy	17
7 The Klondike Gold Rush for Young Readers	18
8 The Resources for Teaching the Klondike	19
9 Index	Inside Back Cover



THE NATIONAL PARK SYSTEM

Congress established Yellowstone National Park March 1, 1872, in the Territories of Montana and Wyoming, "...as a public park or pleasuring ground for the benefit and enjoyment of the people..." and placed it "under the exclusive control of the Secretary of the Interior." Yellowstone was the first National Park in the world. Today there are more than 1,200 national parks or equivalent reserves in more than 100 countries.

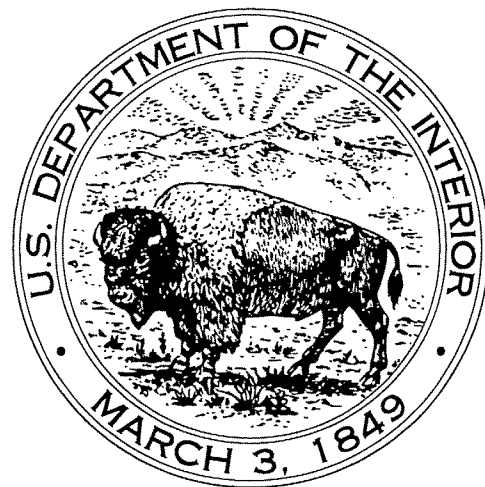
President Woodrow Wilson signed the law establishing the United States National Park Service, August 25, 1916. In part this law states:

"The Service thus established shall promote and regulate the use of Federal areas known as national parks, monuments and reservations by such means and measures as conform to the fundamental purpose of the said parks, monuments and reservations, which purpose is to conserve the scenery and the natural and historic objects and the wild life therein and to provide for the enjoyment of the same in such manner and by such means as will leave them unimpaired for the enjoyment of future generations."

Since 1916, the National Park System has grown to include more than 375 areas and 83 million acres. These areas not only protect unique natural values and biological diversity, but also prehistoric, historic, and cultural values as well. A list of the types of areas and numbers of these areas represented in the National Park System follows:

National Battlefield; National Battlefield Park; National Military Park; National Battlefield Site	24
National Historical Park; National Historical Site; International Historic Site	113

National Lakeshore	4
National Memorial	27
National Monument	73
National Park	54
National Parkway	4
National Preserve/Reserve	18
National Recreation Area	19
National Scenic Trail	3
National Seashore	10
National River; National Wild and Scenic River; National Riverway	15
Without Designation	11



For more information about the National Park System in general, the U. S. Government Printing Office publication The National Parks Index 1997-1999 gives a complete listing of all of the sites that are managed by the National Park Service.

The employees and volunteers of the National Park Service bring a diversity of background and skills to their work. Some park rangers perform resource and visitor protection duties; others work in resource education. Administrative staff, maintenance employees, trail crew, scientists, technicians, researchers, historians, architects, and many others work as a team to care for sites in the National Park System.

