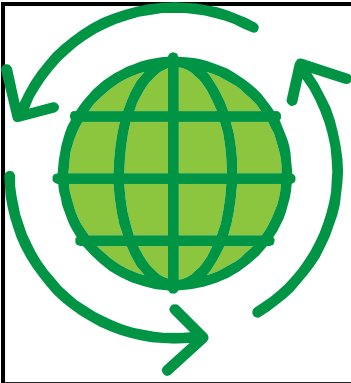


April 7, 2010



Environmental News for Kalaupapa

Issue No. 5

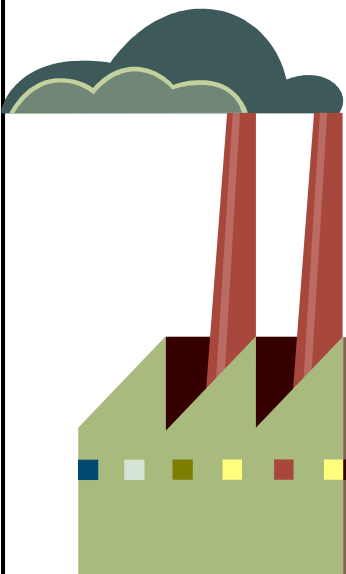
Are you leaving for the weekend?

Consider turning off your hot water heater and air conditioner

Hot water heaters and air conditioning units are two of the greatest energy users in a home. Turning these appliances off when you leave for a day or more can save big money.

At the current cost of \$0.43 per kilowatt hour, a household using 30 gallons of hot water a day spends \$2.80 per day to heat its water. This adds up to almost \$20 per week.

A typical window air conditioning unit costs about \$6 to run for 24 hours, or \$42 for a week.



Because Kalaupapa's electricity is generated from a fuel burning utility, pollution in the form of greenhouse gases is emitted when electricity is used.

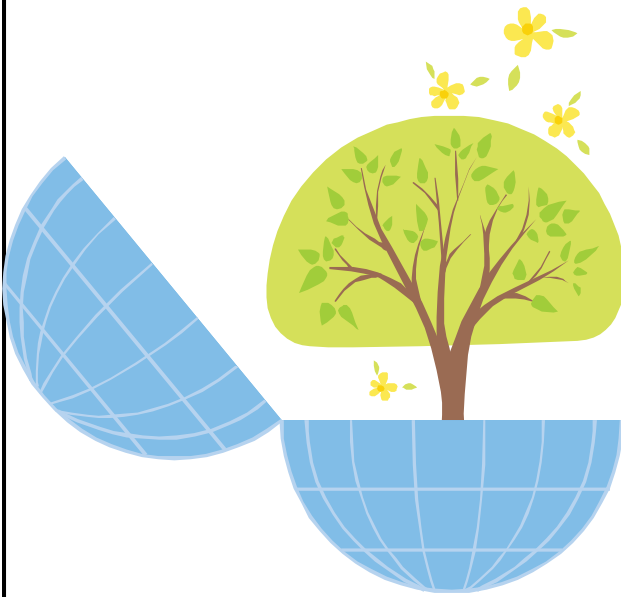
An average hot water heater puts about 1.3 metric tons of carbon dioxide into the air per year. An air conditioner produces 4.3 tons of CO₂ per year.

Next time you leave Kalaupapa, please consider turning off your hot water heater and/or air conditioning unit. A great deal of electricity and greenhouse gas emissions can be saved.

If 20 A/C units in Kalaupapa were turned off for 20 days, it would save \$120 dollars and 146 pounds of carbon dioxide. One person turning off one appliance may not seem like much difference, but if we all participate in energy savings then money can be saved and our "carbon footprint" can be reduced.

(Estimates from www.energy.gov)

Earth Day turns 40



In 1970, the US Government established the first Earth Day. The Environmental Protection Agency (“EPA”) was also created to control pollution in our air and water. Because of the EPA we have laws against pollution.

Now in 2010, Earth Day is celebrating its 40th birthday. The national Earth Day is always April 22nd, but there is a celebration on Moloka'i Friday April 16th from 5pm-9pm at the Mitchell Pauole Center.

Did you Know you can Recycle.....

- Aerosol cans like Lysol or Pam
- The cardboard tube when your toilet paper runs out
- Batteries from your TV remote, watch and car
- Compact fluorescent (“twisty”) lightbulbs
- The plastic tofu container
- Old electronics like TVs and computers
- Newspaper, magazines and junk mail
- The boxes from toothpaste packaging & laundry soap



COMPOST TIP!

Are you hesitant to collect food scraps?

Don't want to attract Pests?

Dislike the smell?

Try storing your slop in the icebox until pick-up day!

