



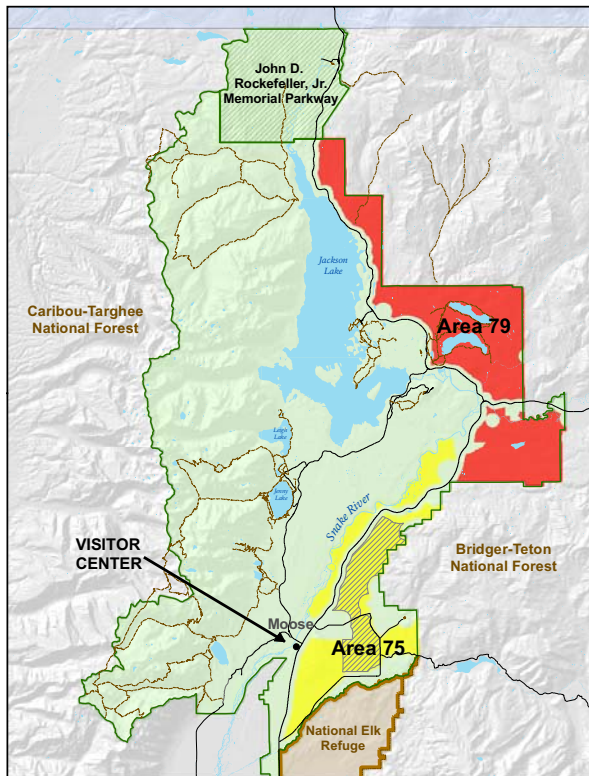
# ELK HUNT IN PROGRESS

Elk that live in Grand Teton National Park are part of the Jackson elk herd, the largest elk herd in the world.

The herd also occupies parts of southern Yellowstone National Park, the Teton Wilderness, the Gros Ventre drainage, and the Gros Ventre Wilderness.

This migratory herd has a long history of intensive management, including supplemental feeding during winter on the National Elk Refuge and 3 state-operated feedgrounds in the Gros Ventre drainage.

In recognition of the continued need to manage the herd, an elk reduction program for the park was authorized by Congress as part of the 1950 legislation creating Grand Teton National Park.



MAP FOR GENERAL REFERENCE ONLY - REFER TO WYOMING STATE COMMISSION ORDERS FOR DETAILED HUNT AREA BOUNDARIES.

The use of hunting programs to control elk numbers predated the 1950 expansion of Grand Teton National Park

The program occurs most years during the fall in hunt areas east of the Snake River (see map) and is regulated and permitted by the National Park Service and the State of Wyoming.

In 2011, the program runs from October 8 to December 4, but all hunt areas are not open for this duration.

**The park's legislation allows for the hunting of elk only. No other hunting is permitted.**

**Hunt areas remain open to visitors but wearing orange or other bright colors is recommended if you plan to hike or visit areas away from roads and developed areas.**

**For more information, please visit the park's visitor center.**