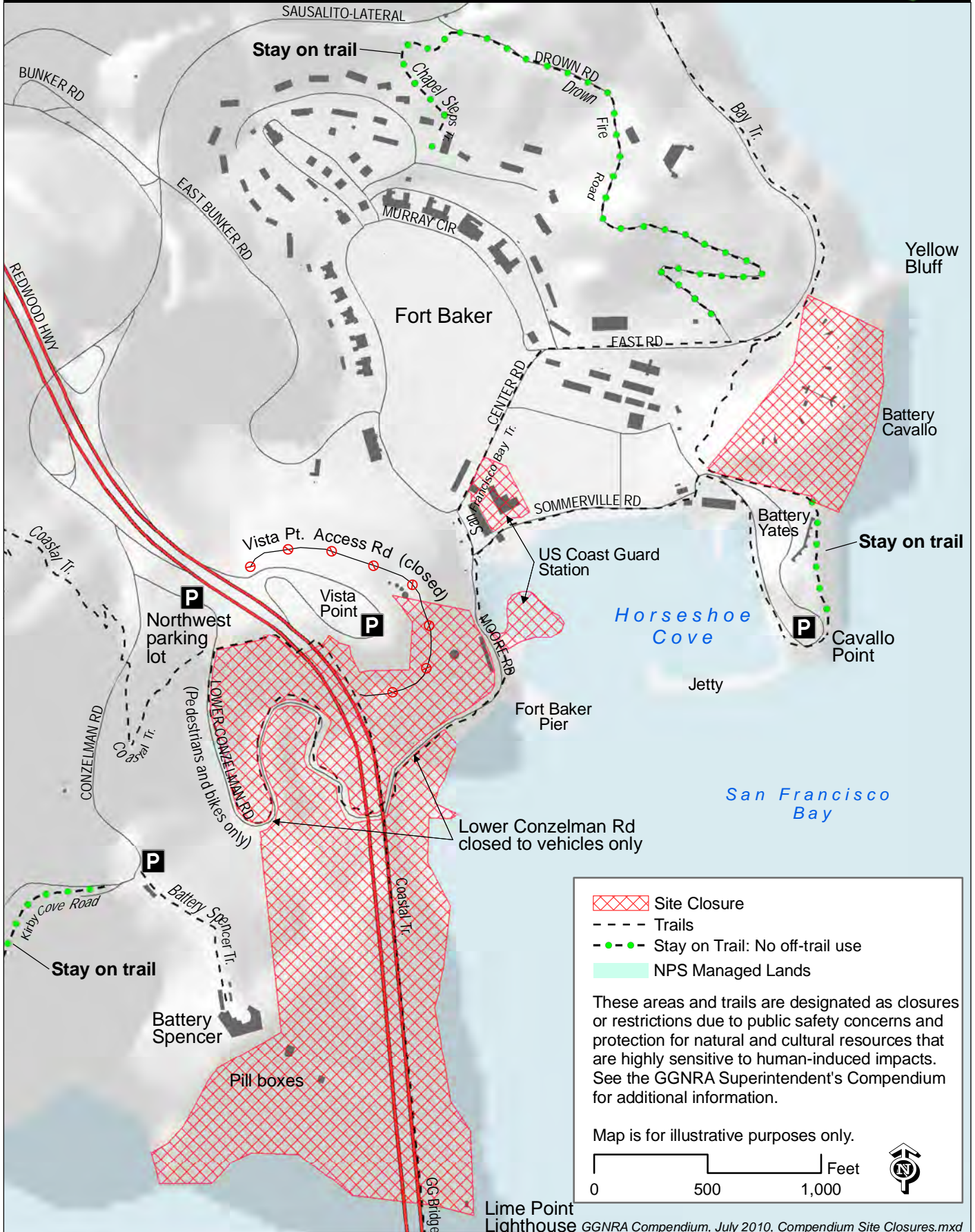


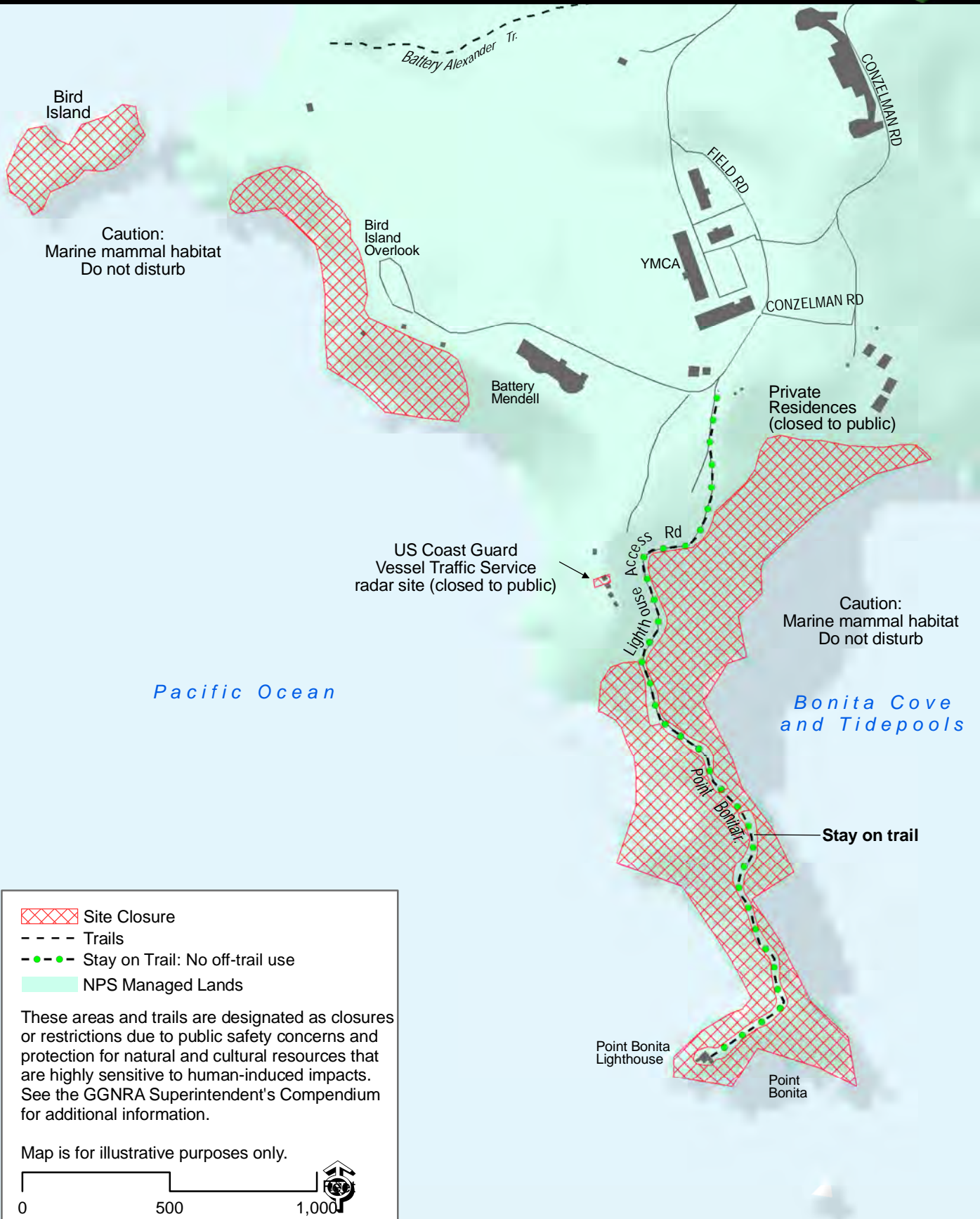
# Exhibit 1 Fort Baker Site Closures and Trail Restrictions

Golden Gate National Recreation Area  
National Park Service  
U.S. Department of the Interior



# Exhibit 2 Point Bonita Site Closures and Trail Restrictions

Golden Gate National Recreation Area  
National Park Service  
U.S. Department of the Interior



XXXXXX Site Closure  
 - - - Trails  
 -●-●- Stay on Trail: No off-trail use  
 NPS Managed Lands

These areas and trails are designated as closures or restrictions due to public safety concerns and protection for natural and cultural resources that are highly sensitive to human-induced impacts. See the GGNRA Superintendent's Compendium for additional information.

Map is for illustrative purposes only.

0                      500                      1,000

**Exhibit 3  
Alcatraz Island  
Bird Nesting Season Closure and Trail Restrictions**

Golden Gate National Recreation Area  
National Park Service  
U.S. Department of the Interior



*San Francisco Bay*

No vessel landings permitted on Alcatraz Island

Caution: Alcatraz is marine mammal and nesting bird habitat  
Do not disturb wildlife



Bird Nesting Closure

Stay on Trail: No off-trail use

Public access may be restricted in this area during bird nesting season of approximately February 1 through September 15, or as determined by the park's wildlife specialist. Additional restrictions may occur throughout the year as needed to protect wildlife, cultural resources, and public safety. See the GGNRA Superintendent's Compendium for additional information.

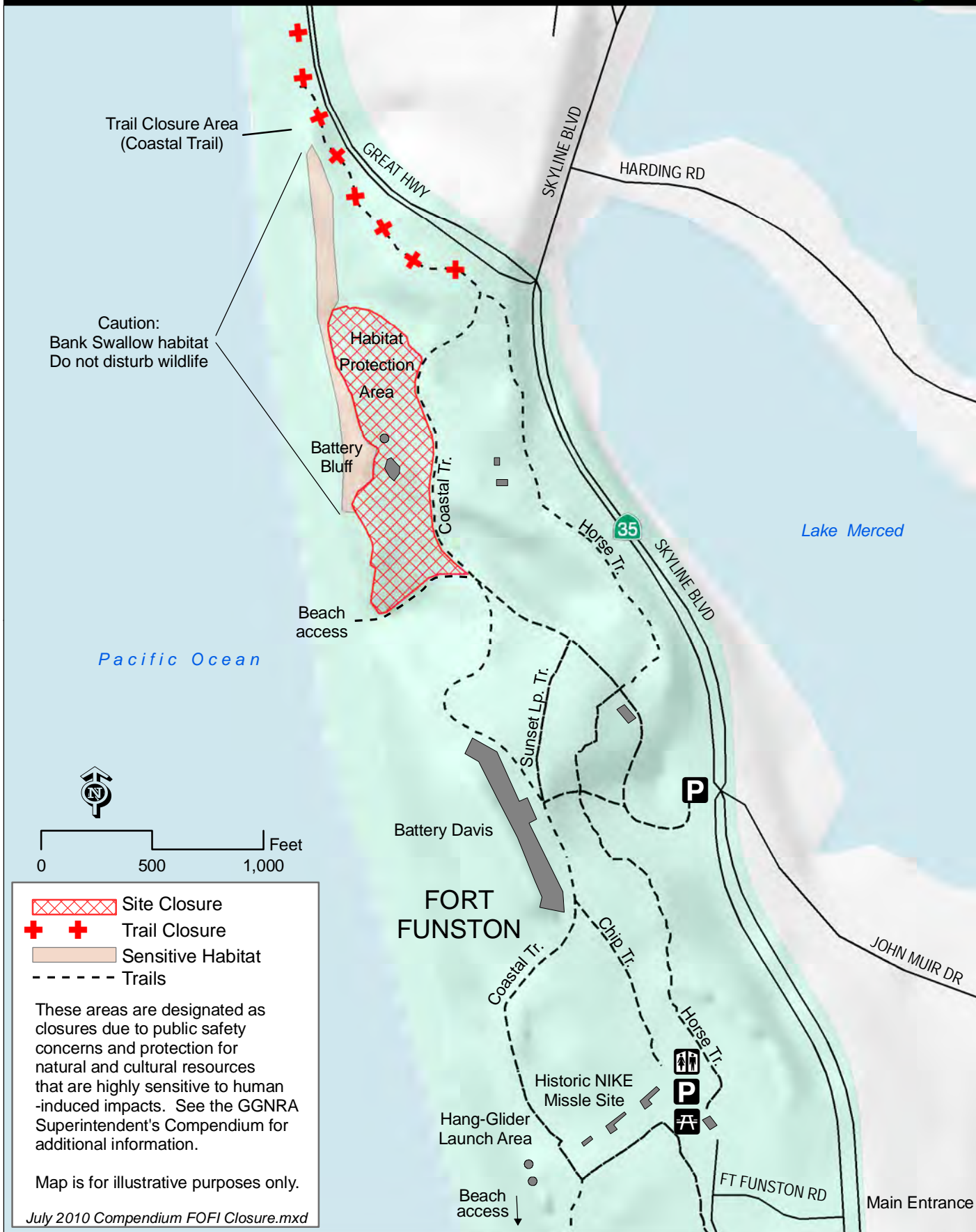
Map is for illustrative purposes only



2010 GGNRA Compendium

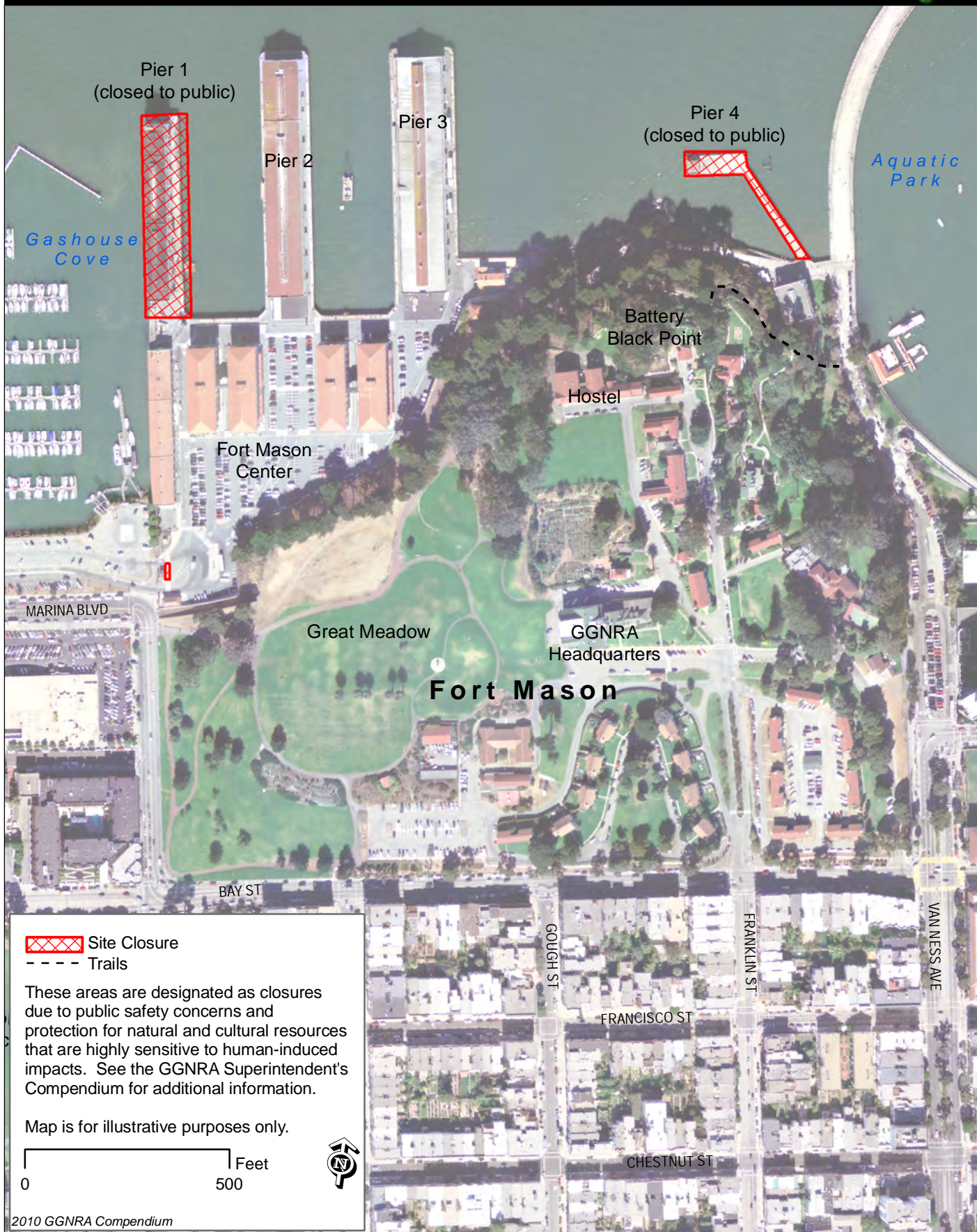
# Exhibit 4 Fort Funston Site Closures

Golden Gate National Recreation Area  
National Park Service  
U.S. Department of the Interior



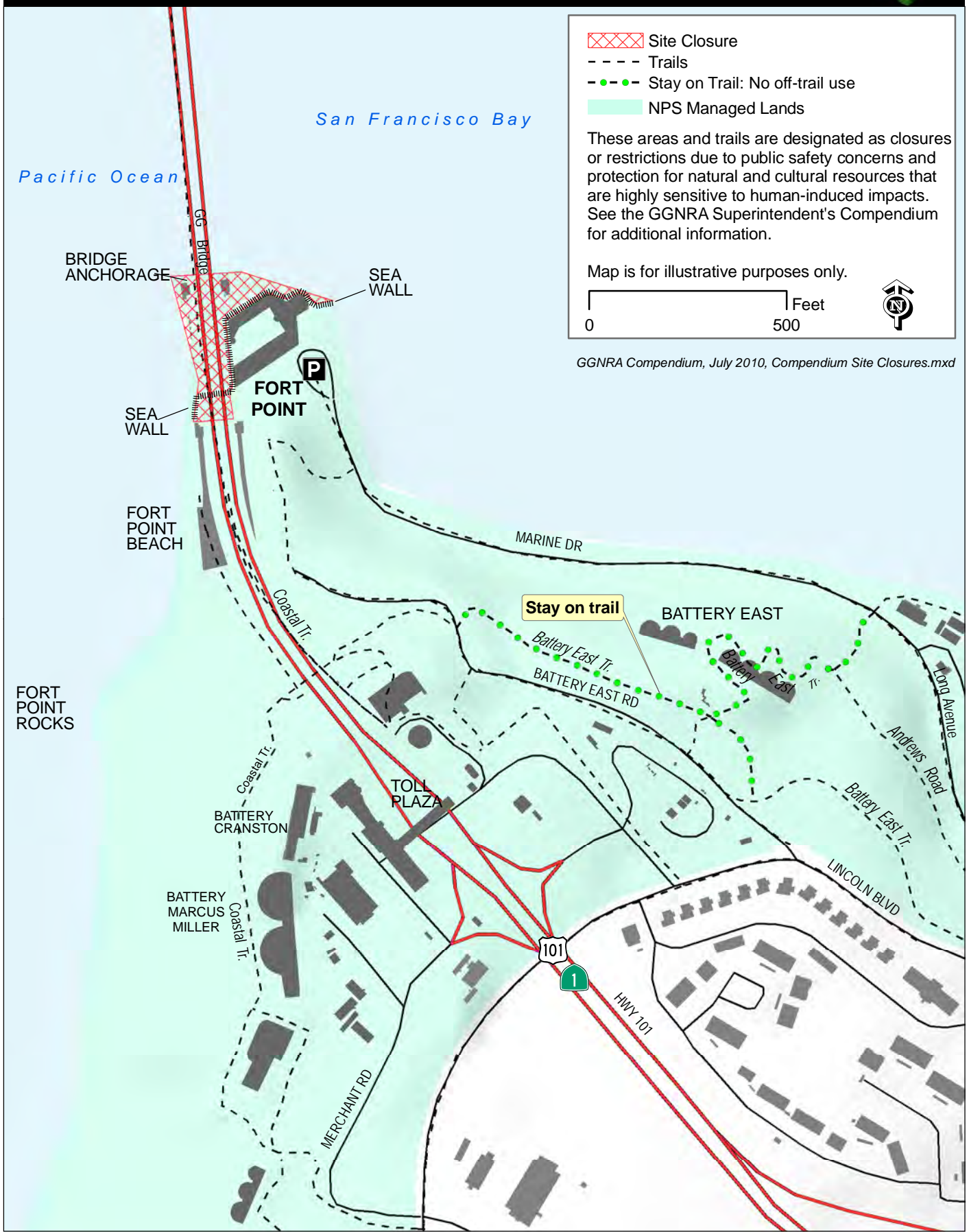
# Exhibit 5 Fort Mason Site Closures

Golden Gate National Recreation Area  
National Park Service  
U.S. Department of the Interior



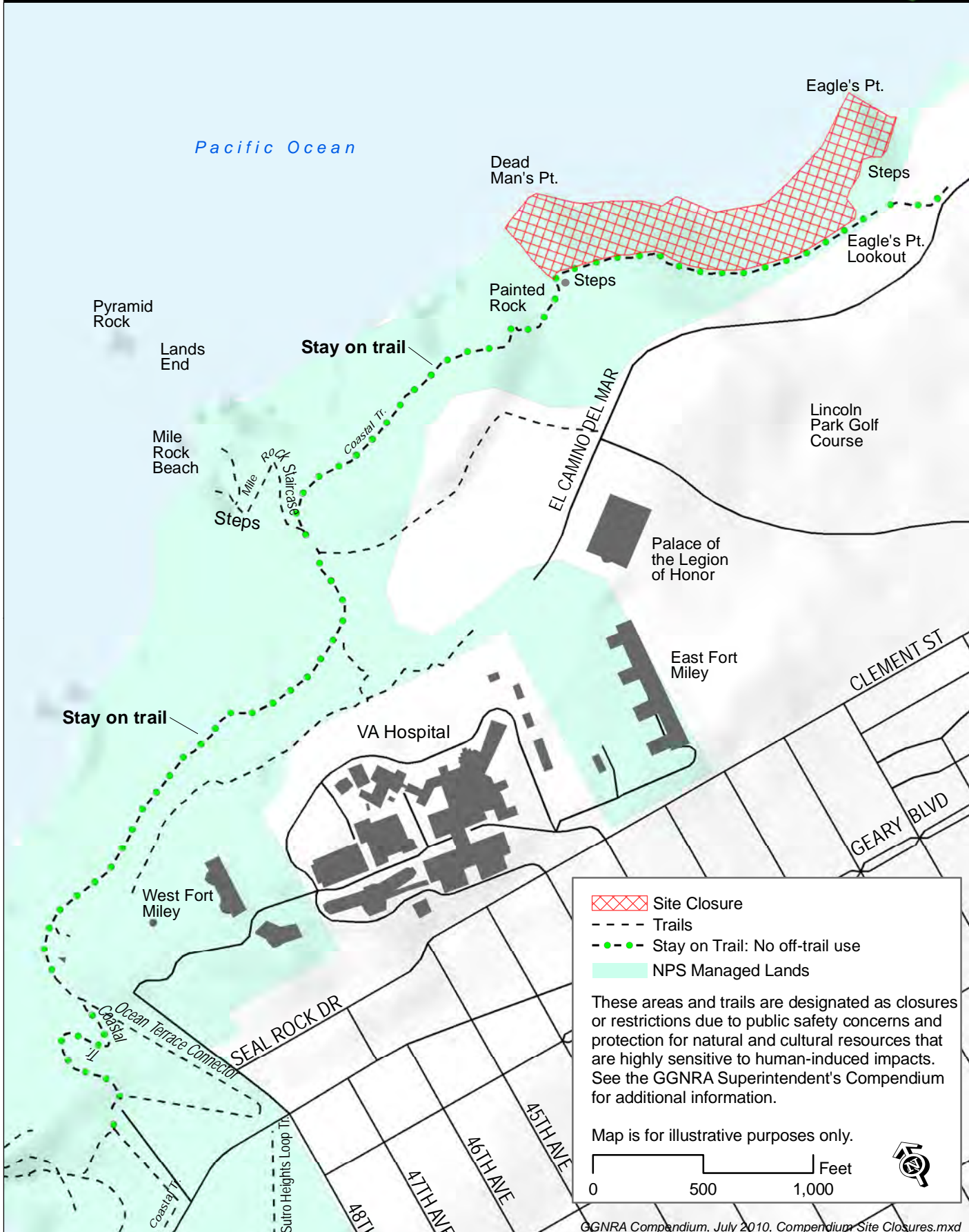
# Exhibit 6 Fort Point Site Closures and Trail Restrictions

Golden Gate National Recreation Area  
National Park Service  
U.S. Department of the Interior



# Exhibit 7 Lands End Site Closures and Trail Restrictions

Golden Gate National Recreation Area  
National Park Service  
U.S. Department of the Interior



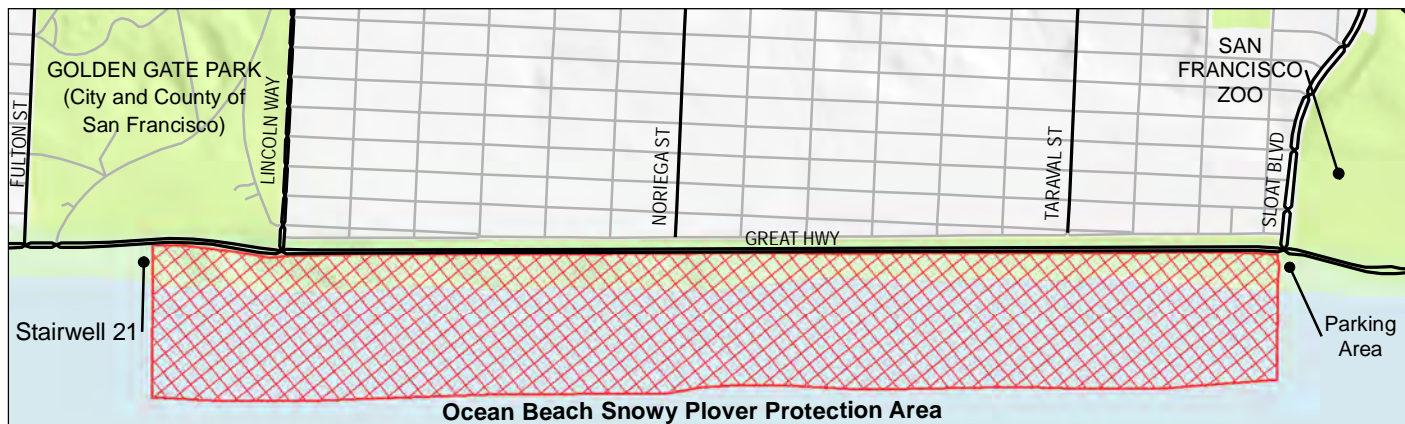
# Exhibit 8 Lobos Creek Site Closures and Trail Restrictions

Golden Gate National Recreation Area  
National Park Service  
U.S. Department of the Interior



**Exhibit 9  
Wildlife Protection Areas  
Crissy Field and Ocean Beach**

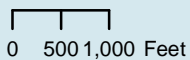
Golden Gate National Recreation Area  
National Park Service  
U.S. Department of the Interior



Site Closure  
 Trails  
 NPS Managed Lands  
 These areas are designated as closures due to public safety concerns and protection for natural and cultural resources that are highly sensitive to human-induced impacts. See the GGNRA Superintendent's Compendium for additional information.

Map is for illustrative purposes only.

Compendium Site Closures.mxd 7/24/09 M. Grupé



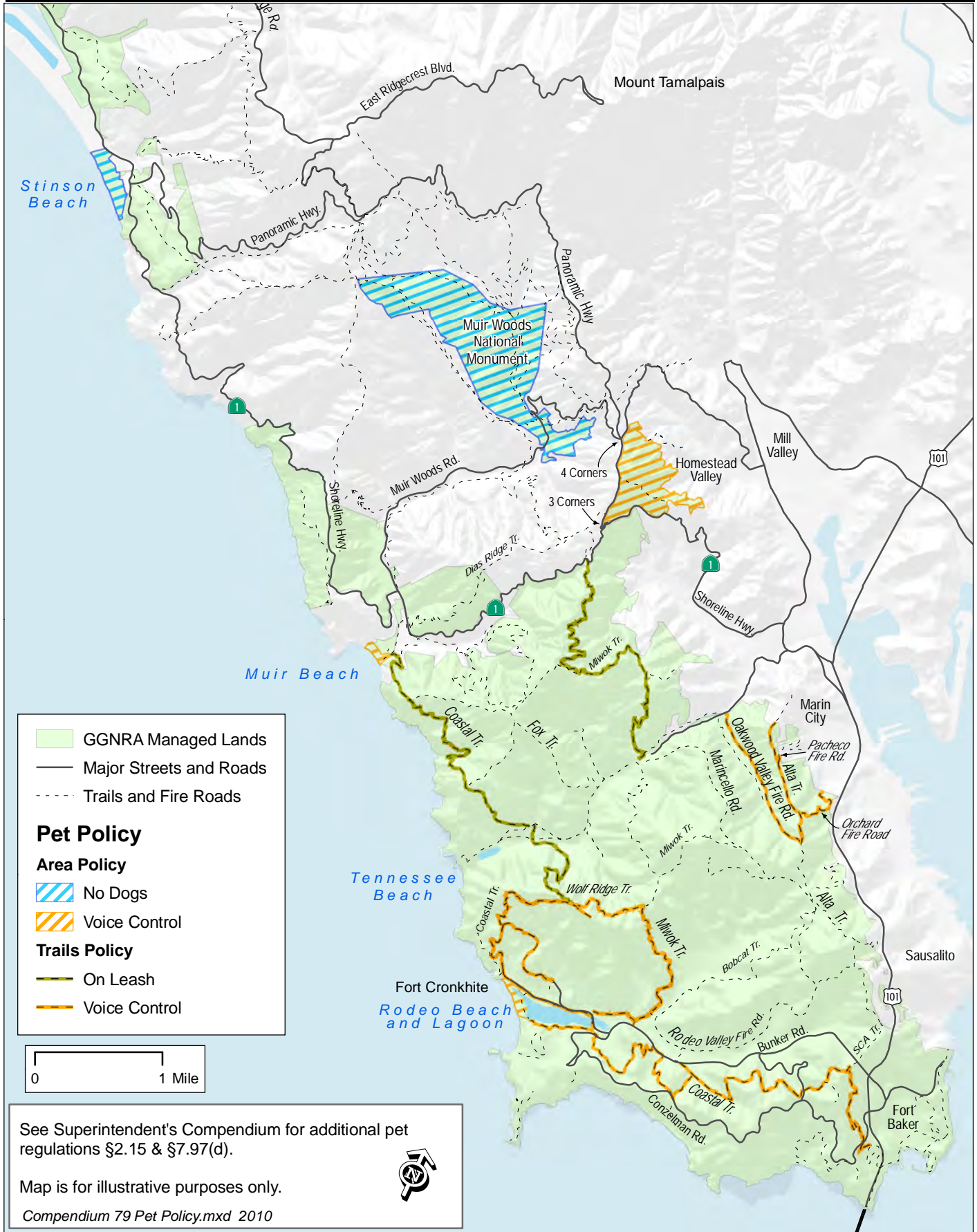
**Exhibit #10A  
1979 Pet Policy and Amending Restrictions  
San Francisco**

Golden Gate National Recreation Area  
National Park Service  
U.S. Department of the Interior



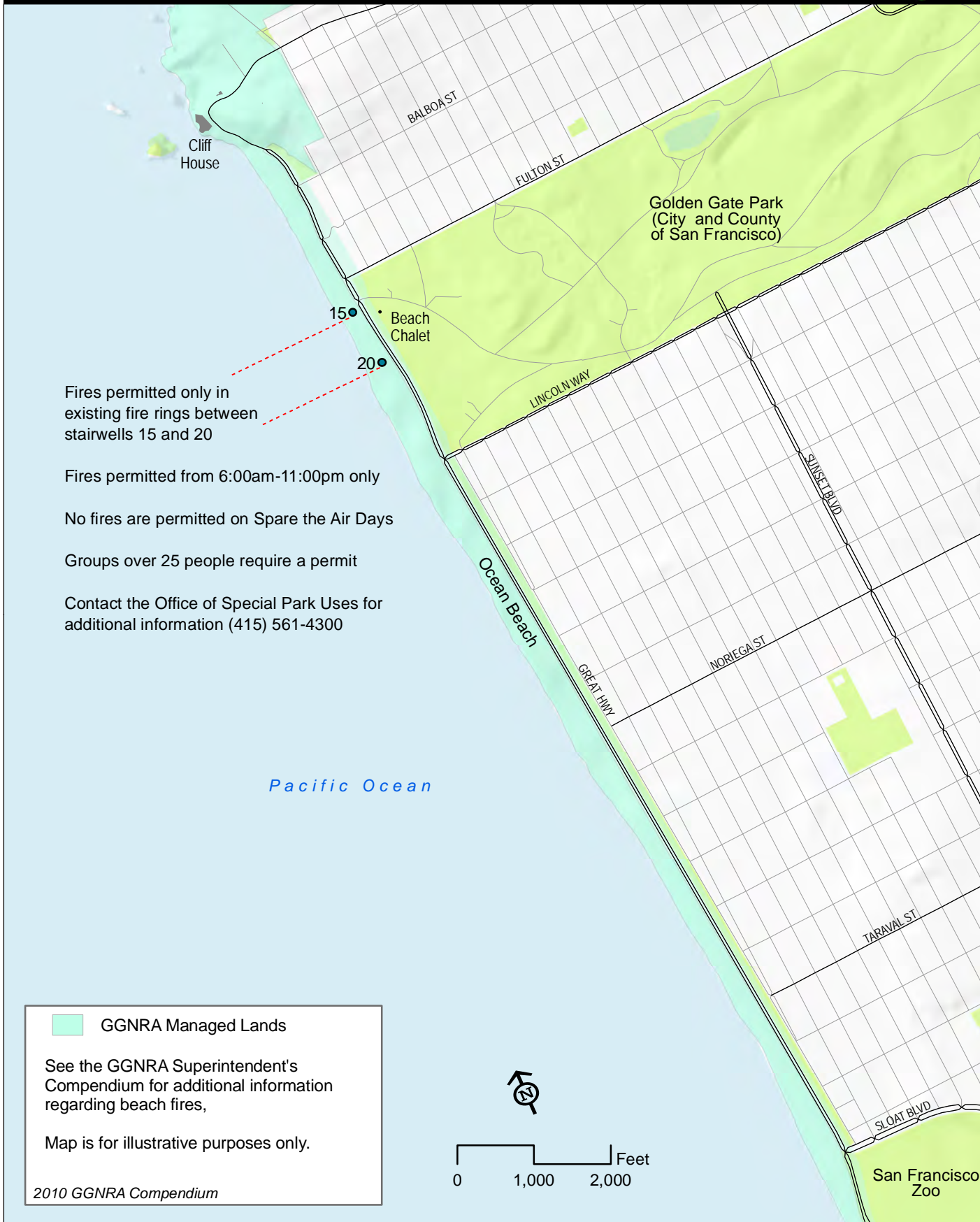
**Exhibit #10B  
1979 Pet Policy  
Marin County**

Golden Gate National Recreation Area  
National Park Service  
U.S. Department of the Interior



# Exhibit 11 Permitted Beach Fire Area Ocean Beach

Golden Gate National Recreation Area  
National Park Service  
U.S. Department of the Interior



Fires permitted only in existing fire rings between stairwells 15 and 20

Fires permitted from 6:00am-11:00pm only

No fires are permitted on Spare the Air Days

Groups over 25 people require a permit

Contact the Office of Special Park Uses for additional information (415) 561-4300

# Exhibit 12 Marin County Trail Restrictions

Golden Gate National Recreation Area  
National Park Service  
U.S. Department of the Interior



- - - Trails  
 - . - . Stay on Trail: No off-trail use  
 NPS Managed Lands

Park visitors in areas high-lighted on this map must stay on trails; NO OFF-TRAIL USE is permitted. Trails restrictions are due to public safety concerns and protection for natural and cultural resources that are highly sensitive to human-induced impacts. See the GGNRA Superintendent's Compendium for additional information.

Map is for illustrative purposes only.

0 1 Miles