



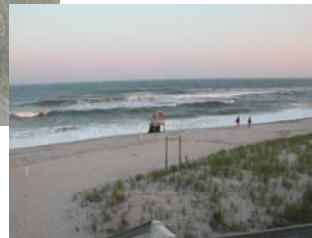
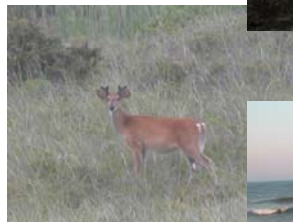
National Park Service  
 U.S. Department of the Interior  
 Fire Island National Seashore  
 120 Laurel Street  
 Patchogue, NY 11772

National Park Service  
 U.S. Department of the Interior



Fire Island National Seashore  
 Patchogue, New York

## 6<sup>th</sup> Biennial Fire Island National Seashore Planning, Science and Research Conference



May 9 and 10, 2007  
 Wang Center  
 Stony Brook University

You are invited to attend the 6<sup>th</sup> Biennial Fire Island National Seashore Planning, Science and Research Conference May 9<sup>th</sup> and May 10<sup>th</sup>, 2007. This conference, which is free and open to the public, will provide an opportunity for members of the scientific community and general public to learn about recent natural and cultural resource planning projects, science inventory and monitoring programs, and research conducted within the boundaries of Fire Island National Seashore. Experts from academia, government, and conservation organizations will present three topic sessions: Planning, Inventory and Monitoring Projects, and on-going Research. This year we will also be offering two panel discussions: one on Marine Stewardship and the other on the Storm Reduction Plan. Conference attendees will gain insight into how the National Park Service uses science to guide management decisions.

**Additional information and registration is available at:**

[www.nps.gov/fiis/scienceconference.htm](http://www.nps.gov/fiis/scienceconference.htm)

**by E-mail:**

[FIIS\\_Science\\_Conference@nps.gov](mailto:FIIS_Science_Conference@nps.gov)

**by phone:**

631-687-5030

**Directions to Wang Center:**

Take the Long Island Expressway (**I-495**) to **Exit 62**, and follow **Nicolls Road** (Route 97) north for 9 miles. The main entrance to **Stony Brook University** is on the left.

**Fee for parking** in the parking garage.

# 6<sup>th</sup> Biennial

## Fire Island National Seashore—Planning, Science and Research Conference

May 9, 2007		
8:00 a.m.	<b>REGISTRATION &amp; COFFEE</b>	
9:00 a.m.	<i>Welcome/Orientation General Management Planning</i>	<b>Michael Reynolds</b> , Superintendent Fire Island National Seashore (FIIS)
9:20 a.m.	<i>Returning the Past to the Present – 1<sup>st</sup> Order Fresnel Lens</i>	<b>Steve Czarniecki</b> FIIS
9:40 a.m.	<i>Coastal Dunes: 1976 – 2000</i>	<b>Norb Psuty</b> Rutgers University
10:00 a.m.	<b>BREAK/Poster Session</b>	
10:20 a.m.	<i>Storm Damage Reduction Planning for the South Shore of Long Island</i> Panel Presentations Fire Island Inlet to Montauk Point Reformulation Plan (FIMP)	<b>Session Chair:</b> <b>Mary Foley</b> , NPS <b>Panel:</b> <b>Steve Couch</b> , USACE, <b>Fred Anders</b> - NYS DOS, <b>Laury Zicari</b> - USFWS, <b>Mike Stankiewicz</b> - NYS DEC, <b>Michael Reynolds</b> - NPS- FIIS
11:00 a.m.		
11:30 a.m.		
12:00 p.m.	<i>Status of Revised Off- Road Vehicle (ORV) Regulation in Fire Island National Seashore</i>	<b>Robin Lepore</b> , Boston Support Office, National Park Service
12:30 – 2:00 p.m.	<b>LUNCH/Poster Sessions</b>	On Your Own
2:00 p.m.	<i>A GIS- based Website of Coastal Erosion Monitoring Data on the South Shore of Long Island</i>	<b>Jay Tanski</b> NY Sea Grant
2:30 p.m.	<i>A New National Park Service Initiative of Ocean Stewardship: Opportunities for Fire Island National Seashore and Great South Bay</i> Panel Discussion	<b>Session Chair:</b> <b>Charles Roman</b> , NPS <b>Panel Participants:</b> <b>Jeffrey Fullmer</b> , SSER, <b>Carl LoBue</b> , TNC, <b>David Conover &amp; Malcolm Bowman</b> , Stony Brook University <b>Gordon Colvin</b> , NYS DEC
3:00 p.m.		
3:30 p.m.		
4:00 p.m.		
4:30 p.m.		

May 10, 2007		
8:00 a.m.	<b>REGISTRATION &amp; COFFEE</b>	
9:00 a.m.	<i>Analysis of the Shallow Ground- Water Flow System at Fire Island National Seashore</i>	<b>Christopher Schubert</b> USGS
9:20 a.m.	<i>Submarine Groundwater Discharge along Fire Island into Great South Bay</i>	<b>Henry Bokuniewicz</b> Stony Brook University
9:40 a.m.	<i>Water Quality Monitoring Program for Great South Bay and Adjacent Waters, Fire Island National Seashore</i>	<b>John Tanacredi</b> Dowling College
10:00 a.m.	<i>The Northeast Coastal and Barrier Network Natural Resource Inventory and Monitoring Program</i>	<b>Sara Stevens</b> University of Rhode Island
10:20 a.m.	<b>BREAK/Poster Session</b>	
11:00 a.m.	<i>Effects of Bulkheads on the Bay Shore of Fire Island National Seashore</i>	<b>Karl Nordstrom</b> Rutgers University
11:30 a.m.	<i>Relationships of Sea- Level Rise, Barrier Island Processes, and Salt Marshes at Fire Island National Seashore</i>	<b>Charles Roman</b> National Park Service
12:00 p.m.	<i>Assessing Changes Associated with Beach Scraping to the Beach/Dune System at FIIS</i>	<b>Erika Lentz</b> USGS- URI
12:30 – 2:00 p.m.	<b>LUNCH/Poster Sessions</b>	On Your Own
2:00 p.m.	<i>Results of the Distance Sampling Population Estimate Method for Determining Deer Frequency at FIIS</i>	<b>Daniel Barrera</b> FIIS
2:20 p.m.	<i>Mosquito Surveillance and Transmission Patterns of West Nile Virus</i>	<b>Howard Ginsberg</b> USGS
2:40 p.m.	<i>Fire Island National Seashore Mosquito Surveillance and Monitoring Program</i>	<b>Fernando Villalba</b> FIIS
3:00 p.m.	<b>BREAK/Poster Session</b>	
3:20 p.m.	<i>Park Flight: Monitoring Overwintering Survival &amp; Evaluation of International Avian Wintering Habitat</i>	<b>Mauricio Hoyas Gracia</b> Park Flight Panama Volunteer
3:40 p.m.	<i>Recent Plover Trends- FIIS Population</i>	<b>Daniel Barrera</b> - FIIS
4:00 p.m.	<i>Concluding Remarks</i>	<b>Michael Bilecki</b> - FIIS