

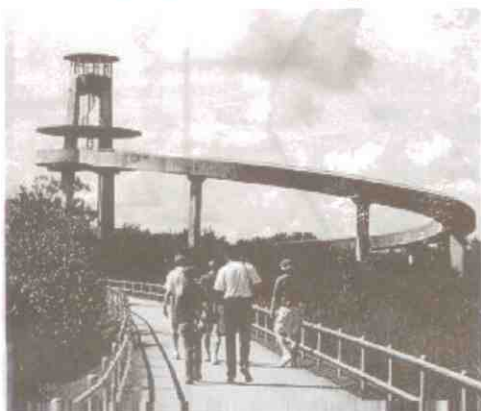


## Bicycling at Shark Valley

### Getting Started

Biking is a great way to experience the quiet beauty of the Everglades. In order to ensure the safety of your group, other visitors, and park wildlife, please take a moment to read the following tips and regulations

### The Scenic Loop



*An observation tower, restrooms, and water fountain are located at the farthest point (and halfway mark) of the loop trail.*

The tram road is 15 miles (24 km) round-trip. There are no short cuts. If you become unable to complete the entire 15-mile trip, turn around and return on the same road.

Bicycling the road takes an average of 2 to 3 hours. The parking lot closes at 6 PM, so be sure to allow enough time.

Travel opposite the flow of tram traffic. Bikes should start behind the Visitor Center and follow the straight West Road.

### Staying Safe

*Follow these simple rules to have a safe, enjoyable visit at Shark Valley:*

Please walk your bicycles on sidewalks.

Stop completely and pull off to the right when a tram approaches. Wait until the tram has completely passed to continue your trip.

Be prepared for all weather conditions. In the summer months, thunderstorms bring hazardous lightning and temperatures can reach the high 90's. Take plenty of water!

Maintain a safe distance (15 feet - 5 meters) from alligators! Feeding or harassing any wildlife is illegal. It is dangerous for you and harmful for them.

Travel at a safe speed. Bicycles at high speeds endanger wildlife and other visitors. The speed limit on the road is 25 mph.

Wear a helmet. State law requires that children under 16 wear helmets. Helmets may be purchased at the tram office.

### Traveling in Groups

*Bicyclists often increase their chance of injury when traveling in large groups. Quick stops or turns may cause others to crash.*

Any group of more than 20 bicyclists must obtain a Special Use Permit prior to their planned ride. Groups who wish to bicycle after park hours are also required to have a permit and are limited to 25 persons. Applications for Special Use Permits can be obtained by calling: (305) 225-3004 or (305) 221-8776



Roller skates, roller blades, skateboards, and other similar devices, as well as unauthorized vehicles, are not allowed on the Shark Valley tram road.