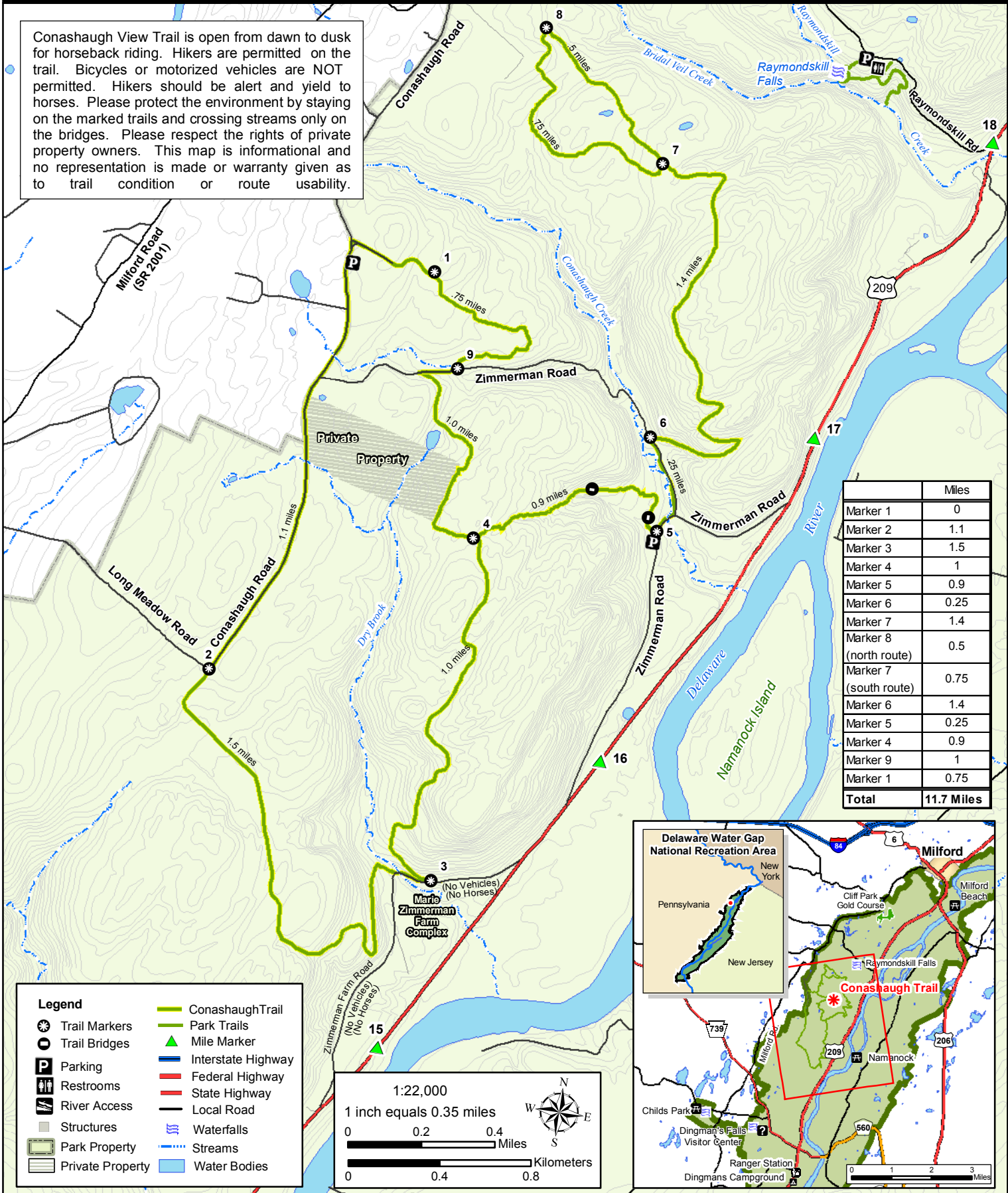


Conashaugh View Equestrian Trail

Delaware Water Gap National Recreation Area
National Park Service Department of the Interior



Conashaugh View Trail is open from dawn to dusk for horseback riding. Hikers are permitted on the trail. Bicycles or motorized vehicles are NOT permitted. Hikers should be alert and yield to horses. Please protect the environment by staying on the marked trails and crossing streams only on the bridges. Please respect the rights of private property owners. This map is informational and no representation is made or warranty given as to trail condition or route usability.



	Miles
Marker 1	0
Marker 2	1.1
Marker 3	1.5
Marker 4	1
Marker 5	0.9
Marker 6	0.25
Marker 7	1.4
Marker 8 (north route)	0.5
Marker 7 (south route)	0.75
Marker 6	1.4
Marker 5	0.25
Marker 4	0.9
Marker 9	1
Marker 1	0.75
Total	11.7 Miles

Legend

- Trail Markers
- Trail Bridges
- Parking
- Restrooms
- River Access
- Structures
- Park Property
- Private Property
- Conashaugh Trail
- Park Trails
- Mile Marker
- Interstate Highway
- Federal Highway
- State Highway
- Local Road
- Waterfalls
- Streams
- Water Bodies

1:22,000
1 inch equals 0.35 miles

0 0.2 0.4 Miles
0 0.4 0.8 Kilometers

