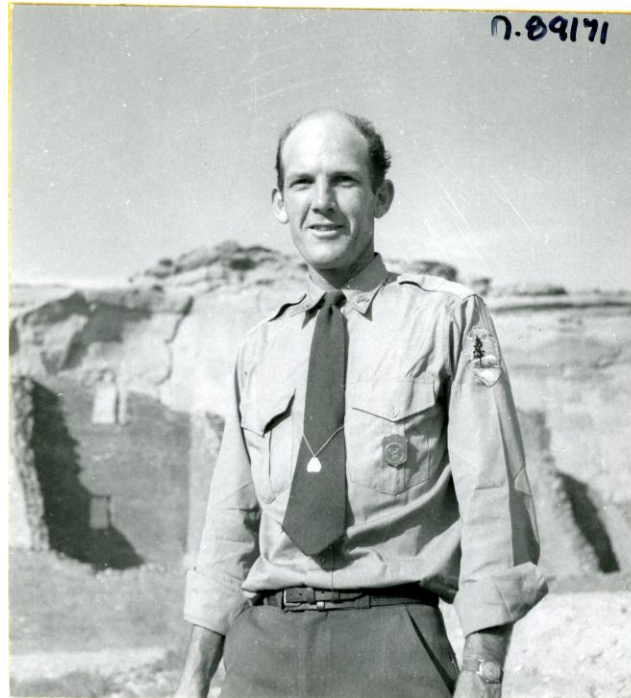




## FINDING AID



## LLOYD PIERSON RECORDS 1942-1963 (bulk dates: 1954-1960)

Prepared by  
Chaco Culture National Historical Park  
National Park Service  
2008

Catalog Number: CHCU 98233

Accession Number: CHCU ACC - 00523

## ***COPYRIGHT AND RESTRICTIONS***

The copyright law of the United States (Title 17, United States Code) governs the making of photocopies or other reproductions of copyrighted materials. The various state privacy acts govern the use of materials that document private individuals, groups, and corporations.

Under certain conditions specified in the law, libraries and archives are authorized to furnish a reproduction if the document does not infringe the privacy rights of an individual, group, or corporation. These specified conditions of authorized use include:

- non-commercial and non-profit study, scholarship, or research, or teaching
- criticism, commentary, or news reporting
- as a NPS preservation or security copy
- as a research copy for deposit in another institution

If a user later uses a copy or reproduction for purposes in excess of "fair use," the user may be personally liable for copyright, privacy, or publicity infringement. This institution's permission to obtain a photographic, xerographic, digital, or other copy of a document doesn't indicate permission to publish, exhibit, perform, reproduce, sell, distribute, or prepare derivative works from this document without first obtaining permission from the copyright holder and from any private individual, group, or corporation shown or otherwise recorded.

Permission to publish, exhibit, perform, reproduce, prepare derivative works from, sell, or otherwise distribute the item must be obtained by the user separately in writing from the holder of the original copyright (or if the creator is dead from his/her heirs) as well as from any individual(s), groups, or corporations whose name, image, recorded words, or private information (e.g., employment information) may be reproduced in the source material. The holder of the original copyright isn't necessarily the National Park Service. The National Park Service is not legally liable for copyright, privacy, or publicity infringement when materials are wrongfully used after being provided to researchers for "fair use."

This institution reserves the right to refuse to accept a copying order if fulfillment of the order is judged in violation of copyright or federal or state privacy or publicity law.

## ***HISTORY***

### **LLOYD M. PIERSON RECORDS**

Lloyd M. Pierson began his association with Chaco Canyon in 1942, as a student in the University of New Mexico's Chaco Field School. During World War II, Lt. Lloyd M. Pierson of the 38th Japanese Order of Battle Team went ashore on the second assault wave, in 1945, landing with Takejiro Higa and advancing inland together through the rural Okinawan countryside. After the war, he returned to Chaco as a field assistant for the 1947 UNM Chaco field School. He earned his M.A. in Anthropology from the University of New Mexico in 1949 with a thesis titled "The prehistoric population of Chaco Canyon, New Mexico: a study in methods and techniques of prehistoric population estimation." He returned to Chaco as a Supervisory Park Ranger from 1954-1956. Between 1948 and 1965, Pierson worked for the NPS as an archaeologist, ranger, and superintendent (De Soto National Memorial, 1963-1965). Pierson worked as a staff archaeologist for the U.S. Bureau of Land Management from 1966 to 1975. After his retirement in 1975, Pierson became an unpaid curator of the Moab Museum in 1979. Since 1978, Pierson has worked as a private archaeological/cultural consultant.

In 1955-56, Lloyd Pierson did a site survey in Chaco Canyon National Monument. This collection contains the records of that survey. The resulting report, "A History of Chaco Canyon National Monument," focuses on Chaco culture history and the history archaeological work in Chaco Canyon.

Pierson has written articles for the Utah Historical Quarterly: "I Remember Bates" (vol. 63, no. 2, p. 135-50) and as the editor of "Rollin J. Reeves and the Boundary Between Utah and Colorado" (vol. 66, no. 2, p. 100-17). Other publications include "Archeological Studies at Tonto National Monument" by Charles R. Steen, Lloyd M. Pierson, Vorsila L. Bohrer, and Kate Peck Kent, 1962, Southwestern Monuments Association Technical Series Vol. 2, Globe, AZ; "A cultural resource summary of the east central portion of the Moab District" for the Moab District, 1981, Bureau of Land Management, Moab, Utah; and "Weaving at the margins: Navajo men as weavers" in "Diné Bíkéyah: papers in honor of David M. Brugge," edited by Meliha S. Duran and David T. Kirkpatrick, 1998, Archaeological Society of New Mexico, Albuquerque, N.M.

***SCOPE AND CONTENT***

LLOYD PIERSON RECORDS  
1942-1986 (bulk dates: 1954-1960)

*COLLECTION NUMBER* 0011

*CATALOG NUMBER* CHCU 98233

*VOLUME* [Count] [Extent]2 [Type of Unit]LF

*DESCRIPTION* Records pertaining to Pierson's archaeological site survey and research on the history of archaeological excavation in Chaco Canyon

Includes site survey file cards, field photos and negatives of most of the sites; correspondence, and a manuscript report on the survey. Also includes a copy of his MA thesis on Chaco Canyon for the University of New Mexico Department of Anthropology.

*ORGANIZATION* [Organization]Organized into 5 Series:

Series 001: Survey cards Series 002: Images Series 003: Reports Series 004: Correspondence Series 005: Maps [Arrangement]

*PROVENANCE* Lloyd Pierson, Chaco Canyon NM

*RESTRICTIONS* NO

## ***HIERARCHY***

*SERIES I: SURVEY CARDS, 1954-1960*

*SERIES II: IMAGES, 1942-1986 (bulk dates: 1960)*

*SUBSERIES I: SITE PHOTOGRAPHS, 1942-1960 (bulk dates: 1960)*

*SUBSERIES II: SURVEY IMAGES OF PEOPLE, 1942-1960*

*SUBSERIES III: SLIDES DONATED IN 2011, 1954-1986 (bulk dates: 1954-1956)*

*SERIES III: REPORTS, 1949-1956*

*SERIES IV: CORRESPONDENCE, 1956-1963*

*SERIES V: MAPS*

## ***SERIES DESCRIPTIONS***

**Collection/Series:** 0011/001  
**Series Title:** SERIES I: SURVEY CARDS

**Accession:** CHCU-00523      **Catalog Nbr:** CHCU 98233  
**Inclusive Dates:** 1954-1960

**History:** NPS ARCHAEOLOGICAL SITE RECORD CARDS (REGION THREE) FROM LLOYD PIERSON'S 1955-1956 SITE SURVEY: FOR MORE INFORMATION SEE COLLECTION LEVEL HISTORY.

**Scope:** Site and Photo Cards 313 SITE CARDS (PRE-PRINTED WITH FIELDS, FRONT & BACK)151 PHOTO CARDS Site specific information typed by Pierson for Bc 26, Bc 50-372. Back of cards have space for sketch location & plan. When present, sketches are in ink. At some point someone else (George Buckingham?) added cards, primarily for the great houses. These cards are handwritten in ink, with minimal information.

Photo cards are stapled to site cards; photo cards have prints pasted on 1 side, photo info typed on back. Negative numbers appear to be WACC's (58000-59000 range).

92 site cards have CHCA negative numbers: #1467-1557.

**Arrangement:** By Bc site number

**Provenance:** Lloyd Pierson

**Notes:** Cards are accompanied by a spreadsheet print out associating Pierson site #s with 29SJ site #s and photo neg #s.

**Series Nbr:** 001

**File Unit:** 01

**Dates:** 1954-1960

**Title:** Lloyd Pierson Site Survey Cards

**Summary Notes:**

313 SITE CARDS (PRE-PRINTED WITH FIELDS, FRONT & BACK)  
151 PHOTO CARDS

Site specific information typed by Pierson for Bc 26, Bc 50-372. Back of cards have space for sketch location & plan. When present, sketches are in ink.

At some point someone else (George Buckingham?) added cards, primarily for the great houses. These cards are handwritten in ink, with minimal information.

Photo cards are stapled to site cards; photo cards have prints pasted on 1 side, photo info typed on back. Negative numbers appear to be WACC's (58000-59000 range).

92 site cards have CHCA negative numbers: #1467-1557.

**Associated Material:**

Spreadsheet with a container list is stored on the server P:0011 Pierson 001 container list

---

**Collection/Series:** 0011/002  
**Series Title:** SERIES II: IMAGES

**Accession:** CHCU-00523      **Catalog Nbr:** CHCU 98233  
**Inclusive Dates:** 1942-1986      **Bulk Dates:** 1960

**History:** FOR MORE INFORMATION SEE COLLECTION LEVEL HISTORY.

**Scope:** Black & white and color prints 180 Black & white prints and negatives of 90 sites from the 1960 survey (negative # 90025-90114 ) and 15 black and white and color prints donated during the Old Timers Reunion in 1990, of UNM field school facilities, Tomacito's hogan, and people including Tony Trujillo, Charlie Attency, Catherine, John, and Ella Cly, and images from Pierson's ranger days at Chaco (negative # 35423A&B, 78784-78797), dating from 1942-1955.SEE ITEM LEVEL DESCRIPTION. 128 colour slides added to the collection in 2011

Old catalog number 52430

**Arrangement:** Organized into 3 subseries: Subseries I: Site Photographs, Subseries II: People, Subseries III: Slides Donated in 2011

**Provenance:** LLOYD PIERSON, NPS 1960 AND OLD TIMERS REUNION 1990



**Collection/Series:** 0011/002.001

**Series Title:** ---SUBSERIES I: SITE PHOTOGRAPHS

**Accession:** CHCU-00523      **Catalog Nbr:** CHCU 98233

**Inclusive Dates:** 1942-1960      **Bulk Dates:** 1960

**History:** 180 Black & white prints and negatives of 90 sites from the 1960 survey (negative # 90025-90114)

**Arrangement:** Organized by site number

**Provenance:** LLOYD PIERSON, NPS 1960 AND OLD TIMERS REUNION 1990

**Series Nbr:** 002.001  
**Item Nbr:** 90025  
**Title:** BC 60  
**Dates:** 1960  
**Creator:** Lloyd Pierson  
**Summary Notes:** 1 NEGATIVE; 1 PRINT

---

**Series Nbr:** 002.001  
**Item Nbr:** 90026  
**Title:** BC 62  
**Dates:** 1960  
**Creator:** Lloyd Pierson  
**Summary Notes:** 1 NEGATIVE; 1 PRINT

---

**Series Nbr:** 002.001  
**Item Nbr:** 90027  
**Title:** BC 73  
**Dates:** 1960  
**Creator:** Lloyd Pierson  
**Summary Notes:** 1 NEGATIVE; 1 PRINT

---

**Series Nbr:** 002.001  
**Item Nbr:** 90028  
**Title:** BC 75 AND 74  
**Dates:** 1960  
**Creator:** Lloyd Pierson  
**Summary Notes:** 1 NEGATIVE; 1 PRINT

---

**Series Nbr:** 002.001  
**Item Nbr:** 90029  
**Title:** BC 76  
**Dates:** 1960  
**Creator:** Lloyd Pierson  
**Summary Notes:** 1 NEGATIVE; 1 PRINT

---

**Series Nbr:** 002.001  
**Item Nbr:** 90030  
**Title:** BC 77  
**Dates:** 1960  
**Creator:** Lloyd Pierson  
**Summary Notes:** 1 NEGATIVE; 1 PRINT

---

**Series Nbr:** 002.001  
**Item Nbr:** 90031  
**Title:** BC 104  
**Dates:** 1960  
**Creator:** Lloyd Pierson  
**Summary Notes:** 1 NEGATIVE; 1 PRINT

---

**Series Nbr:** 002.001  
**Item Nbr:** 90032  
**Title:** BC 105  
**Dates:** 1960  
**Creator:** Lloyd Pierson  
**Summary Notes:** 1 NEGATIVE; 1 PRINT

---

**Series Nbr:** 002.001  
**Item Nbr:** 90033  
**Title:** BC 106  
**Dates:** 1960  
**Creator:** Lloyd Pierson  
**Summary Notes:** 1 NEGATIVE; 1 PRINT

---

**Series Nbr:** 002.001  
**Item Nbr:** 90034  
**Title:** BC 107  
**Dates:** 1960  
**Creator:** Lloyd Pierson  
**Summary Notes:** 1 NEGATIVE; 1 PRINT

---

**Series Nbr:** 002.001  
**Item Nbr:** 90035  
**Title:** BC 114. 113. 115  
**Dates:** 1960  
**Creator:** Lloyd Pierson  
**Summary Notes:** 1 NEGATIVE; 1 PRINT

---

**Series Nbr:** 002.001  
**Item Nbr:** 90036  
**Title:** BC 116  
**Dates:** 1960  
**Creator:** Lloyd Pierson  
**Summary Notes:** 1 NEGATIVE; 1 PRINT

---

**Series Nbr:** 002.001  
**Item Nbr:** 90037  
**Title:** BC 120 AND 121  
**Dates:** 1960  
**Creator:** Lloyd Pierson  
**Summary Notes:** 1 NEGATIVE; 1 PRINT

---

**Series Nbr:** 002.001  
**Item Nbr:** 90038  
**Title:** BC 117. 118. 119.  
**Dates:** 1960  
**Creator:** Lloyd Pierson  
**Summary Notes:** 1 NEGATIVE; 1 PRINT

---

**Series Nbr:** 002.001  
**Item Nbr:** 90039  
**Title:** BC 122  
**Dates:** 1960  
**Creator:** Lloyd Pierson  
**Summary Notes:** 1 NEGATIVE; 1 PRINT

---

**Series Nbr:** 002.001  
**Item Nbr:** 90040  
**Title:** BC 123  
**Dates:** 1960  
**Creator:** Lloyd Pierson  
**Summary Notes:** 1 NEGATIVE; 1 PRINT

---

**Series Nbr:** 002.001  
**Item Nbr:** 90041  
**Title:** BC 126 AND 125  
**Dates:** 1960  
**Creator:** Lloyd Pierson  
**Summary Notes:** 1 NEGATIVE; 1 PRINT

---

**Series Nbr:** 002.001  
**Item Nbr:** 90042  
**Title:** BC 127  
**Dates:** 1960  
**Creator:** Lloyd Pierson

**Summary Notes:** 1 NEGATIVE; 1 PRINT

---

**Series Nbr:** 002.001  
**Item Nbr:** 90043  
**Title:** BC 129  
**Dates:** 1960  
**Creator:** Lloyd Pierson  
**Summary Notes:** 1 NEGATIVE; 1 PRINT

---

**Series Nbr:** 002.001  
**Item Nbr:** 90044  
**Title:** BC 128  
**Dates:** 1960  
**Creator:** Lloyd Pierson  
**Summary Notes:** 1 NEGATIVE; 1 PRINT

---

**Series Nbr:** 002.001  
**Item Nbr:** 90045  
**Title:** BC 131  
**Dates:** 1960  
**Creator:** Lloyd Pierson  
**Summary Notes:** 1 NEGATIVE; 1 PRINT

---

**Series Nbr:** 002.001  
**Item Nbr:** 90046  
**Title:** BC 132  
**Dates:** 1960  
**Creator:** Lloyd Pierson  
**Summary Notes:** 1 NEGATIVE; 1 PRINT

---

**Series Nbr:** 002.001  
**Item Nbr:** 90047  
**Title:** BC 144  
**Dates:** 1960  
**Creator:** Lloyd Pierson  
**Summary Notes:** 1 NEGATIVE; 1 PRINT

---

**Series Nbr:** 002.001  
**Item Nbr:** 90048  
**Title:** BC 145  
**Dates:** 1960

**Creator:** Lloyd Pierson  
**Summary Notes:** 1 NEGATIVE; 1 PRINT

---

**Series Nbr:** 002.001  
**Item Nbr:** 90049  
**Title:** BC 146  
**Dates:** 1960  
**Creator:** Lloyd Pierson  
**Summary Notes:** 1 NEGATIVE; 1 PRINT

---

**Series Nbr:** 002.001  
**Item Nbr:** 90050  
**Title:** BC 147  
**Dates:** 1960  
**Creator:** Lloyd Pierson  
**Summary Notes:** 1 NEGATIVE; 1 PRINT

---

**Series Nbr:** 002.001  
**Item Nbr:** 90051  
**Title:** BC 149 AND 148  
**Dates:** 1960  
**Creator:** Lloyd Pierson  
**Summary Notes:** 1 NEGATIVE; 1 PRINT

---

**Series Nbr:** 002.001  
**Item Nbr:** 90052  
**Title:** BC 150  
**Dates:** 1960  
**Creator:** Lloyd Pierson  
**Summary Notes:** 1 NEGATIVE; 1 PRINT

---

**Series Nbr:** 002.001  
**Item Nbr:** 90053  
**Title:** BC 152 AND 151  
**Dates:** 1960  
**Creator:** Lloyd Pierson  
**Summary Notes:** 1 NEGATIVE; 1 PRINT

---

**Series Nbr:** 002.001  
**Item Nbr:** 90054  
**Title:** BC 153

**Dates:** 1960  
**Creator:** Lloyd Pierson  
**Summary Notes:** 1 NEGATIVE; 1 PRINT

---

**Series Nbr:** 002.001  
**Item Nbr:** 90055  
**Title:** BC 156  
**Dates:** 1960  
**Creator:** Lloyd Pierson  
**Summary Notes:** 1 NEGATIVE; 1 PRINT

---

**Series Nbr:** 002.001  
**Item Nbr:** 90056  
**Title:** BC 158  
**Dates:** 1960  
**Creator:** Lloyd Pierson  
**Summary Notes:** 1 NEGATIVE; 1 PRINT

---

**Series Nbr:** 002.001  
**Item Nbr:** 90057  
**Title:** BC 159  
**Dates:** 1960  
**Creator:** Lloyd Pierson  
**Summary Notes:** 1 NEGATIVE; 1 PRINT

---

**Series Nbr:** 002.001  
**Item Nbr:** 90058  
**Title:** BC 160  
**Dates:** 1960  
**Creator:** Lloyd Pierson  
**Summary Notes:** 1 NEGATIVE; 1 PRINT

---

**Series Nbr:** 002.001  
**Item Nbr:** 90059  
**Title:** BC 161  
**Dates:** 1960  
**Creator:** Lloyd Pierson  
**Summary Notes:** 1 NEGATIVE; 1 PRINT

---

**Series Nbr:** 002.001  
**Item Nbr:** 90060

**Title:** BC 162  
**Dates:** 1960  
**Creator:** Lloyd Pierson  
**Summary Notes:** 1 NEGATIVE; 1 PRINT

---

**Series Nbr:** 002.001  
**Item Nbr:** 90061  
**Title:** BC 163  
**Dates:** 1960  
**Creator:** Lloyd Pierson  
**Summary Notes:** 1 NEGATIVE; 1 PRINT

---

**Series Nbr:** 002.001  
**Item Nbr:** 90062  
**Title:** BC 164 AND 165  
**Dates:** 1960  
**Creator:** Lloyd Pierson  
**Summary Notes:** 1 NEGATIVE; 1 PRINT

---

**Series Nbr:** 002.001  
**Item Nbr:** 90063  
**Title:** BC 167  
**Dates:** 1960  
**Creator:** Lloyd Pierson  
**Summary Notes:** 1 NEGATIVE; 1 PRINT

---

**Series Nbr:** 002.001  
**Item Nbr:** 90064  
**Title:** BC 172  
**Dates:** 1960  
**Creator:** Lloyd Pierson  
**Summary Notes:** 1 NEGATIVE; 1 PRINT

---

**Series Nbr:** 002.001  
**Item Nbr:** 90065  
**Title:** BC 174  
**Dates:** 1960  
**Creator:** Lloyd Pierson  
**Summary Notes:** 1 NEGATIVE; 1 PRINT

---

**Series Nbr:** 002.001



**Item Nbr:** 90066  
**Title:** BC 175  
**Dates:** 1960  
**Creator:** Lloyd Pierson  
**Summary Notes:** 1 NEGATIVE; 1 PRINT

---

**Series Nbr:** 002.001  
**Item Nbr:** 90067  
**Title:** BC 176  
**Dates:** 1960  
**Creator:** Lloyd Pierson  
**Summary Notes:** 1 NEGATIVE; 1 PRINT

---

**Series Nbr:** 002.001  
**Item Nbr:** 90068  
**Title:** BC 177  
**Dates:** 1960  
**Creator:** Lloyd Pierson  
**Summary Notes:** 1 NEGATIVE; 1 PRINT

---

**Series Nbr:** 002.001  
**Item Nbr:** 90069  
**Title:** BC 178  
**Dates:** 1960  
**Creator:** Lloyd Pierson  
**Summary Notes:** 1 NEGATIVE; 1 PRINT

---

**Series Nbr:** 002.001  
**Item Nbr:** 90070  
**Title:** BC 179  
**Dates:** 1960  
**Creator:** Lloyd Pierson  
**Summary Notes:** 1 NEGATIVE; 1 PRINT

---

**Series Nbr:** 002.001  
**Item Nbr:** 90071  
**Title:** BC 180  
**Dates:** 1960  
**Creator:** Lloyd Pierson  
**Summary Notes:** 1 NEGATIVE; 1 PRINT

---

**Series Nbr:** 002.001  
**Item Nbr:** 90072  
**Title:** BC 182  
**Dates:** 1960  
**Creator:** Lloyd Pierson  
**Summary Notes:** 1 NEGATIVE; 1 PRINT

---

**Series Nbr:** 002.001  
**Item Nbr:** 90073  
**Title:** BC 183  
**Dates:** 1960  
**Creator:** Lloyd Pierson  
**Summary Notes:** 1 NEGATIVE; 1 PRINT

---

**Series Nbr:** 002.001  
**Item Nbr:** 90074  
**Title:** BC 184  
**Dates:** 1960  
**Creator:** Lloyd Pierson  
**Summary Notes:** 1 NEGATIVE; 1 PRINT

---

**Series Nbr:** 002.001  
**Item Nbr:** 90075  
**Title:** BC 185  
**Dates:** 1960  
**Creator:** Lloyd Pierson  
**Summary Notes:** 1 NEGATIVE; 1 PRINT

---

**Series Nbr:** 002.001  
**Item Nbr:** 90076  
**Title:** BC 186  
**Dates:** 1960  
**Creator:** Lloyd Pierson  
**Summary Notes:** 1 NEGATIVE; 1 PRINT

---

**Series Nbr:** 002.001  
**Item Nbr:** 90077  
**Title:** BC 187  
**Dates:** 1960  
**Creator:** Lloyd Pierson  
**Summary Notes:** 1 NEGATIVE; 1 PRINT

---

**Series Nbr:** 002.001  
**Item Nbr:** 90078  
**Title:** BC 225  
**Dates:** 1960  
**Creator:** Lloyd Pierson  
**Summary Notes:** 1 NEGATIVE; 1 PRINT

---

**Series Nbr:** 002.001  
**Item Nbr:** 90079  
**Title:** BC 368 AND 226  
**Dates:** 1960  
**Creator:** Lloyd Pierson  
**Summary Notes:** 1 NEGATIVE; 1 PRINT

---

**Series Nbr:** 002.001  
**Item Nbr:** 90080  
**Title:** BC 227  
**Dates:** 1960  
**Creator:** Lloyd Pierson  
**Summary Notes:** 1 NEGATIVE; 1 PRINT

---

**Series Nbr:** 002.001  
**Item Nbr:** 90081  
**Title:** BC 228  
**Dates:** 1960  
**Creator:** Lloyd Pierson  
**Summary Notes:** 1 NEGATIVE; 1 PRINT

---

**Series Nbr:** 002.001  
**Item Nbr:** 90082  
**Title:** BC 229  
**Dates:** 1960  
**Creator:** Lloyd Pierson  
**Summary Notes:** 1 NEGATIVE; 1 PRINT

---

**Series Nbr:** 002.001  
**Item Nbr:** 90083  
**Title:** BC 230  
**Dates:** 1960  
**Creator:** Lloyd Pierson  
**Summary Notes:** 1 NEGATIVE; 1 PRINT

---

**Series Nbr:** 002.001  
**Item Nbr:** 90084  
**Title:** BC 231  
**Dates:** 1960  
**Creator:** Lloyd Pierson  
**Summary Notes:** 1 NEGATIVE; 1 PRINT

---

**Series Nbr:** 002.001  
**Item Nbr:** 90085  
**Title:** BC 232  
**Dates:** 1960  
**Creator:** Lloyd Pierson  
**Summary Notes:** 1 NEGATIVE; 1 PRINT

---

**Series Nbr:** 002.001  
**Item Nbr:** 90086  
**Title:** BC 233  
**Dates:** 1960  
**Creator:** Lloyd Pierson  
**Summary Notes:** 1 NEGATIVE; 1 PRINT

---

**Series Nbr:** 002.001  
**Item Nbr:** 90087  
**Title:** BC 234  
**Dates:** 1960  
**Creator:** Lloyd Pierson  
**Summary Notes:** 1 NEGATIVE; 1 PRINT

---

**Series Nbr:** 002.001  
**Item Nbr:** 90088  
**Title:** BC 235  
**Dates:** 1960  
**Creator:** Lloyd Pierson  
**Summary Notes:** 1 NEGATIVE; 1 PRINT

---

**Series Nbr:** 002.001  
**Item Nbr:** 90089  
**Title:** BC 237  
**Dates:** 1960  
**Creator:** Lloyd Pierson

**Summary Notes:** 1 NEGATIVE; 1 PRINT

---

**Series Nbr:** 002.001

**Item Nbr:** 90090

**Title:** BC 238

**Dates:** 1960

**Creator:** Lloyd Pierson

**Summary Notes:** 1 NEGATIVE; 1 PRINT

---

**Series Nbr:** 002.001

**Item Nbr:** 90091

**Title:** BC 239

**Dates:** 1960

**Creator:** Lloyd Pierson

**Summary Notes:** 1 NEGATIVE; 1 PRINT

---

**Series Nbr:** 002.001

**Item Nbr:** 90092

**Title:** BC 240

**Dates:** 1960

**Creator:** Lloyd Pierson

**Summary Notes:** 1 NEGATIVE; 1 PRINT

---

**Series Nbr:** 002.001

**Item Nbr:** 90093

**Title:** BC 241

**Dates:** 1960

**Creator:** Lloyd Pierson

**Summary Notes:** 1 NEGATIVE; 1 PRINT

---

**Series Nbr:** 002.001

**Item Nbr:** 90094

**Title:** BC 242

**Dates:** 1960

**Creator:** Lloyd Pierson

**Summary Notes:** 1 NEGATIVE; 1 PRINT

---

**Series Nbr:** 002.001

**Item Nbr:** 90095

**Title:** BC 352

**Dates:** 1960

**Creator:** Lloyd Pierson  
**Summary Notes:** 1 NEGATIVE; 1 PRINT

---

**Series Nbr:** 002.001  
**Item Nbr:** 90096  
**Title:** BC 354  
**Dates:** 1960  
**Creator:** Lloyd Pierson  
**Summary Notes:** 1 NEGATIVE; 1 PRINT

---

**Series Nbr:** 002.001  
**Item Nbr:** 90097  
**Title:** BC 353  
**Dates:** 1960  
**Creator:** Lloyd Pierson  
**Summary Notes:** 1 NEGATIVE; 1 PRINT

---

**Series Nbr:** 002.001  
**Item Nbr:** 90098  
**Title:** BC 355  
**Dates:** 1960  
**Creator:** Lloyd Pierson  
**Summary Notes:** 1 NEGATIVE; 1 PRINT

---

**Series Nbr:** 002.001  
**Item Nbr:** 90099  
**Title:** BC 356  
**Dates:** 1960  
**Creator:** Lloyd Pierson  
**Summary Notes:** 1 NEGATIVE; 1 PRINT

---

**Series Nbr:** 002.001  
**Item Nbr:** 90100  
**Title:** BC 357  
**Dates:** 1960  
**Creator:** Lloyd Pierson  
**Summary Notes:** 1 NEGATIVE; 1 PRINT

---

**Series Nbr:** 002.001  
**Item Nbr:** 90101  
**Title:** BC 358

**Dates:** 1960  
**Creator:** Lloyd Pierson  
**Summary Notes:** 1 NEGATIVE; 1 PRINT

---

**Series Nbr:** 002.001  
**Item Nbr:** 90102  
**Title:** BC 360  
**Dates:** 1960  
**Creator:** Lloyd Pierson  
**Summary Notes:** 1 NEGATIVE; 1 PRINT

---

**Series Nbr:** 002.001  
**Item Nbr:** 90103  
**Title:** BC 361  
**Dates:** 1960  
**Creator:** Lloyd Pierson  
**Summary Notes:** 1 NEGATIVE; 1 PRINT

---

**Series Nbr:** 002.001  
**Item Nbr:** 90104  
**Title:** BC 362  
**Dates:** 1960  
**Creator:** Lloyd Pierson  
**Summary Notes:** 1 NEGATIVE; 1 PRINT

---

**Series Nbr:** 002.001  
**Item Nbr:** 90105  
**Title:** BC 363  
**Dates:** 1960  
**Creator:** Lloyd Pierson  
**Summary Notes:** 1 NEGATIVE; 1 PRINT

---

**Series Nbr:** 002.001  
**Item Nbr:** 90106  
**Title:** BC 364  
**Dates:** 1960  
**Creator:** Lloyd Pierson  
**Summary Notes:** 1 NEGATIVE; 1 PRINT

---

**Series Nbr:** 002.001  
**Item Nbr:** 90107

**Title:** BC 365  
**Dates:** 1960  
**Creator:** Lloyd Pierson  
**Summary Notes:** 1 NEGATIVE; 1 PRINT

---

**Series Nbr:** 002.001  
**Item Nbr:** 90108  
**Title:** BC 366  
**Dates:** 1960  
**Creator:** Lloyd Pierson  
**Summary Notes:** 1 NEGATIVE; 1 PRINT

---

**Series Nbr:** 002.001  
**Item Nbr:** 90109  
**Title:** BC 367  
**Dates:** 1960  
**Creator:** Lloyd Pierson  
**Summary Notes:** 1 NEGATIVE; 1 PRINT

---

**Series Nbr:** 002.001  
**Item Nbr:** 90110  
**Title:** BC 369  
**Dates:** 1960  
**Creator:** Lloyd Pierson  
**Summary Notes:** 1 NEGATIVE; 1 PRINT

---

**Series Nbr:** 002.001  
**Item Nbr:** 90111  
**Title:** BC 370  
**Dates:** 1960  
**Creator:** Lloyd Pierson  
**Summary Notes:** 1 NEGATIVE; 1 PRINT

---

**Series Nbr:** 002.001  
**Item Nbr:** 90112  
**Title:** BC 371  
**Dates:** 1960  
**Creator:** Lloyd Pierson  
**Summary Notes:** 1 NEGATIVE; 1 PRINT

---

**Series Nbr:** 002.001



**Item Nbr:** 90113  
**Title:** BC 372  
**Dates:** 1960  
**Creator:** Lloyd Pierson  
**Summary Notes:** 1 NEGATIVE; 1 PRINT

---

**Series Nbr:** 002.001  
**Item Nbr:** 90114  
**Title:** BC 181  
**Dates:** 1960  
**Creator:** Lloyd Pierson  
**Summary Notes:** 1 NEGATIVE; 1 PRINT

---

**Collection/Series:** 0011/002.002

**Series Title:** ---SUBSERIES II: SURVEY IMAGES OF PEOPLE

**Accession:** CHCU-00523

**Catalog Nbr:** CHCU 98233

**Inclusive Dates:** 1942-1960

**Bulk Dates:**

**History:** 15 black and white and color prints donated during the Old Timers Reunion in 1990, of UNM field school facilities, Tomacito's hogan, and people including Tony Trujillo, Charlie Attencity, Catherine, John, and Ella Cly, and images from Pierson's ranger days at Chaco (negative # 35423A&B, 78784-78797), dating from 1942-1955

**Arrangement:** Organized by negative number

**Provenance:** LLOYD PIERSON, NPS 1960 AND OLD TIMERS REUNION 1990

**Series Nbr:** 002.002  
**Item Nbr:** 0035423A-B  
**Title:** TOMASITO'S HOGANS IN SOUTH GAP.  
**Dates:** 1942  
**Phys Desc:** PHOTO OF PHOTO IN PIERSON MSS  
**Summary Notes:** LLOYD PIERSON. 2 PRINTS

---

**Series Nbr:** 002.002  
**Item Nbr:** 0078784  
**Title:** HOGAN DORM, UNM CHACO FIELD SCHOOL  
**Dates:** 1942  
**Summary Notes:** LLOYD PIERSON

---

**Series Nbr:** 002.002  
**Item Nbr:** 0078785  
**Title:** UNM CHACO FIELD SCHOOL ON A TRIP  
**Dates:** 1942  
**Summary Notes:** LLOYD PIERSON

---

**Series Nbr:** 002.002  
**Item Nbr:** 0078786  
**Title:** TONY TRUJILLO, NAVAJO EXCAVATOR. WORKED WITH JUDD  
**Dates:** 1942  
**Summary Notes:** LLOYD PIERSON

---

**Series Nbr:** 002.002  
**Item Nbr:** 0078787  
**Title:** PUEBLO BONITO WITH "GHOSTS" -  
**Dates:** 1955  
**Summary Notes:** LLOYD PIERSON

---

**Series Nbr:** 002.002  
**Item Nbr:** 0078788  
**Title:** CHARLIE ATENCITTY FAMILY AT FAJADA BUTTE, WITH SHEEP  
**Dates:** 1954  
**Summary Notes:** LLOYD PIERSON

---

**Series Nbr:** 002.002  
**Item Nbr:** 0078789  
**Title:** PUEBLO BONITO "GHOSTS"  
**Dates:** 1955

**Summary Notes:** LLOYD PIERSON

---

**Series Nbr:** 002.002

**Item Nbr:** 0078790

**Title:** JUNIOR RANGER AND "TOURIST" AT PUEBLO BONITO

**Dates:** 1956

**Summary Notes:** LLOYD PIERSON

---

**Series Nbr:** 002.002

**Item Nbr:** 0078791

**Title:** "SANTA" AT FAJADA BUTTE

**Dates:** 1955

**Summary Notes:** LLOYD PIERSON

---

**Series Nbr:** 002.002

**Item Nbr:** 0078792

**Title:** CATHERINE CLY AND BABY IN CRADLEBOARD

**Dates:** 1956

**Summary Notes:** LLOYD PIERSON

---

**Series Nbr:** 002.002

**Item Nbr:** 0078793

**Title:** ELA CLY, JOE CLY'S SISTER, AT FAJADA BUTTE

**Dates:** 1956

**Summary Notes:** LLOYD PIERSON

---

**Series Nbr:** 002.002

**Item Nbr:** 0078794

**Title:** JOHN AND CATHERINE CLY AND FAMILY AT HOGAN

**Dates:** 1956

**Summary Notes:** LLOYD PIERSON

---

**Series Nbr:** 002.002

**Item Nbr:** 0078795

**Title:** CHARLIE ATENCITY FAMILY MOVING TO SUMMER CAMP ON CHACRA MESA,  
WITH HORSE AND WAGON

**Dates:** 1954

**Summary Notes:** LLOYD PIERSON

---

**Series Nbr:** 002.002

**Item Nbr:** 0078796

**Title:** ROCK ART - "POMO-PIETO" - BEHIND CHETRO KETL ON BENCH

**Dates:** 1955

**Summary Notes:** LLOYD PIERSON

---

**Series Nbr:** 002.002

**Item Nbr:** 0078797

**Title:** UNM CHACO FIELD SCHOOL GROUP PHOTO IN FRONT OF MAIN BUILDING

**Dates:** 1942

**Summary Notes:** PAUL REITER, PHOTOGRAPHER. IDs: BETTY THORN, MARION PEARSALL, LLOYD PIERSON, IDAHA ELLINGSON, ERNIE BLUMENTHAL, DR. LELAND C. WYMAN, BETTY CLARK, HERBERT DICK, FLORA BAILEY, WALTER SULLIVAN.

---

**Collection/Series:** 0011/002.003

**Series Title:** ---SUBSERIES III: SLIDES DONATED IN 2011

**Accession:** CHCU-00859

**Catalog Nbr:** CHCU 98233

**Inclusive Dates:** 1954-1986

**Bulk Dates:** 1954-1956

**History:** FOR MORE INFORMATION SEE COLLECTION LEVEL HISTORY.

**Scope:** COLOUR SLIDES NEG #S 112505-112613

SEE ITEM LEVEL DESCRIPTION

**Arrangement:** RECEIVED IN CAROUSEL WHEEL - KEPT IN THAT ORDER SCANNED, DIGITAL IMAGES ON P DRIVE, PAPER CONTACT SHEET IN DOCUMENT BOXES. SLIDES PUT INTO COLD STORAGE

**Provenance:** LLOYD PIERSON

**Notes:** DEED OF GIFT GIVES NPS UNRESTRICTED RIGHTS TO IMAGES

**Series Nbr:** 002.003

**File Unit:** 01

**Dates:** 1954-1956

**Title:** Contact Sheets

**Summary Notes:**

Printed copies of digital versions of the slides contained within the subseries; printed 1/10/2012

---

**File Unit Nbr:** 01

**Item Nbr:** 112505

**Title:** Pueblo Bonito Oct 54

**Dates:** Oct 1954

**Creator:** PIERSON, LLOYD

**Summary Notes:** Distant view of Pueblo Bonito

---

**File Unit Nbr:** 01

**Item Nbr:** 112506

**Title:** Chetro Kettle Nov 1954

**Dates:** Nov 1954

**Creator:** PIERSON, LLOYD

**Summary Notes:** Mesa top view of Chetro Ketl, woman and two small children in foreground

---

**File Unit Nbr:** 01

**Item Nbr:** 112507

**Title:** Chetro Kettle CCN 1956

**Dates:** 1956

**Creator:** PIERSON, LLOYD

**Summary Notes:** Distant view of Chetro Ketl

---

**File Unit Nbr:** 01

**Item Nbr:** 112508

**Title:** Chaco Mus.

**Dates:** Sep 1959 (slide processing date)

**Creator:** PIERSON, LLOYD

**Summary Notes:** Museum case with 'Religion' as title and a few artifacts on display in a dark room

---

**File Unit Nbr:** 01

**Item Nbr:** 112509

**Title:** NW Pueblo Alto Oct 54

**Dates:** Oct 1954

**Creator:** PIERSON, LLOYD

**Summary Notes:** Very distant view of Pueblo Alto

---

**File Unit Nbr:** 01

**Item Nbr:** 112510

**Title:** 6 Toes Chaco

**Dates:** May 1972 (slide processing date)

**Creator:** PIERSON, LLOYD

**Summary Notes:** Rock art depicting 6 toed feet

---

**File Unit Nbr:** 01

**Item Nbr:** 112511

**Title:** Chaco Museum

**Dates:** Sep 1959 (slide processing date)

**Creator:** PIERSON, LLOYD

**Summary Notes:** Shot of various displays in the old Chaco visitor center, near cabinet is labelled 'Dress'

---

**File Unit Nbr:** 01

**Item Nbr:** 112512

**Title:** Chaco P.B. Diorama

**Dates:** May 1972 (slide processing date)

**Creator:** PIERSON, LLOYD

**Summary Notes:** Visitor Center Diorama of an inhabited Pueblo Bonito

---

**File Unit Nbr:** 01

**Item Nbr:** 112513

**Title:** Sai Yutosha Sal Amopi I/A CCN 1956

**Dates:** 1956

**Creator:** PIERSON, LLOYD

**Summary Notes:** Bull mask lying on wall

---

**File Unit Nbr:** 01

**Item Nbr:** 112514

**Title:** Kin Ya'a Sept '56

**Dates:** Sept 1956

**Creator:** PIERSON, LLOYD

**Summary Notes:** Shot of Kin Ya'a, early morning or late afternoon

---

**File Unit Nbr:** 01

**Item Nbr:** 112515

**Title:** Pueblo Pintado May 56



**Dates:** May 1956  
**Creator:** PIERSON, LLOYD  
**Summary Notes:** Distant shot of Pueblo Pintado

---

**File Unit Nbr:** 01  
**Item Nbr:** 112516  
**Title:** Kin Ya'a CCN 1956  
**Dates:** 1956  
**Creator:** PIERSON, LLOYD  
**Summary Notes:** Shot of Kin Ya'a

---

**File Unit Nbr:** 01  
**Item Nbr:** 112517  
**Title:** DINE' CCN 56  
**Dates:** 1956  
**Creator:** PIERSON, LLOYD  
**Summary Notes:** Shot of carriage and horses

---

**File Unit Nbr:** 01  
**Item Nbr:** 112518  
**Title:** Rincon del Camino CCN Jan 56  
**Dates:** Jan 1956  
**Creator:** PIERSON, LLOYD  
**Summary Notes:** Shot of road and rocks

---

**File Unit Nbr:** 01  
**Item Nbr:** 112519  
**Title:** Early Masonry Kin Bineola 1956  
**Dates:** 1956  
**Creator:** PIERSON, LLOYD  
**Summary Notes:** Rock wall

---

**File Unit Nbr:** 01  
**Item Nbr:** 112520  
**Title:** Gallo Cliff Dwelling Chaco 1955  
**Dates:** 1955  
**Creator:** PIERSON, LLOYD  
**Summary Notes:** small ruin, background in shadow

---

**File Unit Nbr:** 01  
**Item Nbr:** 112521

**Title:** Bonito Masonry 1956 CCN  
**Dates:** 1956  
**Creator:** PIERSON, LLOYD  
**Summary Notes:** rock wall

---

**File Unit Nbr:** 01  
**Item Nbr:** 112522  
**Title:** Pueblo Alto New CCN Oct 54  
**Dates:** Oct 1954  
**Creator:** PIERSON, LLOYD  
**Summary Notes:** very distant horizon shot of Pueblo Alto, small child in foreground

---

**File Unit Nbr:** 01  
**Item Nbr:** 112523  
**Title:** Pueblo Bonito CCN  
**Dates:** May 1972 (slide processing date)  
**Creator:** PIERSON, LLOYD  
**Summary Notes:** shot of extensive series of walls

---

**File Unit Nbr:** 01  
**Item Nbr:** 112524  
**Title:** Exposed Ruin P II-III E boundary Chaco; xcavted by Roberts? Oct 1954  
**Dates:** Oct 1954  
**Creator:** PIERSON, LLOYD  
**Summary Notes:** ruin walls on small cliff above slope

---

**File Unit Nbr:** 01  
**Item Nbr:** 112525  
**Title:** Kin Bineola 1955  
**Dates:** 1955  
**Creator:** PIERSON, LLOYD  
**Summary Notes:** Side shot of ruins, rough grass in foreground

---

**File Unit Nbr:** 01  
**Item Nbr:** 112526  
**Title:** Kin Bineola 1955  
**Dates:** 1955  
**Creator:** PIERSON, LLOYD  
**Summary Notes:** distant shot of ruins

---

**File Unit Nbr:** 01

**Item Nbr:** 112527  
**Title:** New Campground CCN 1956  
**Dates:** 1956  
**Creator:** PIERSON, LLOYD  
**Summary Notes:** Campground with picnic table, chairs, car and people

---

**File Unit Nbr:** 01  
**Item Nbr:** 112528  
**Title:** Chaco HQ Winter 54-5  
**Dates:** 1954-1955  
**Creator:** PIERSON, LLOYD  
**Summary Notes:** Park visitor contact station covered in snow

---

**File Unit Nbr:** 01  
**Item Nbr:** 112529  
**Title:** Petroglyphs CCN <> 136 Apr 56  
**Dates:** Apr 1956  
**Creator:** PIERSON, LLOYD  
**Summary Notes:** Small petroglyphs on cliff face

---

**File Unit Nbr:** 01  
**Item Nbr:** 112530  
**Title:** 6 on 1 - Rinconada Oct 54  
**Dates:** Oct 1954  
**Creator:** PIERSON, LLOYD  
**Summary Notes:** Very distant shot of mesa

---

**File Unit Nbr:** 01  
**Item Nbr:** 112531  
**Title:** Viva Roof - Chaco  
**Dates:** Sep 1959 (slide processing date)  
**Creator:** PIERSON, LLOYD  
**Summary Notes:** Interior shot of ruin

---

**File Unit Nbr:** 01  
**Item Nbr:** 112532  
**Title:** Bonito Back Wall CCN 1956  
**Dates:** 1956  
**Creator:** PIERSON, LLOYD  
**Summary Notes:** Ruin below shadowed mesa walls

---

**File Unit Nbr:** 01  
**Item Nbr:** 112533  
**Title:** P. Bonito Oct 54  
**Dates:** Oct 1954  
**Creator:** PIERSON, LLOYD  
**Summary Notes:** Ruins in shadow

---

**File Unit Nbr:** 01  
**Item Nbr:** 112534  
**Title:** Bonito N. Section CCN 1956  
**Dates:** 1956  
**Creator:** PIERSON, LLOYD  
**Summary Notes:** Shot of several ruin walls.

---

**File Unit Nbr:** 01  
**Item Nbr:** 112535  
**Title:** Plan: Casa Rinconada  
**Dates:** May 1985 (slide processing date)  
**Creator:** PIERSON, LLOYD  
**Summary Notes:** Plan of the Great Kiva

---

**File Unit Nbr:** 01  
**Item Nbr:** 112536  
**Title:** Rinconada CCN  
**Dates:** May 1972 (slide processing date)  
**Creator:** PIERSON, LLOYD  
**Summary Notes:** Interior view of roofless kiva

---

**File Unit Nbr:** 01  
**Item Nbr:** 112537  
**Title:** Kivas Bonito CCN 1957  
**Dates:** 1957  
**Creator:** PIERSON, LLOYD  
**Summary Notes:** Shot of ruins from above

---

**File Unit Nbr:** 01  
**Item Nbr:** 112538  
**Title:** Bonito Back Wall Oct 54  
**Dates:** Oct 1954  
**Creator:** PIERSON, LLOYD  
**Summary Notes:** Ruin wall amongst large rocks, woman standing in doorway

---

**File Unit Nbr:** 01  
**Item Nbr:** 112539  
**Title:** Bonito Back Wall CCN 1956  
**Dates:** 1956  
**Creator:** PIERSON, LLOYD  
**Summary Notes:** wall in shadow, scrub bushes in foreground

---

**File Unit Nbr:** 01  
**Item Nbr:** 112540  
**Title:** Hungo Pavie 1955  
**Dates:** 1955  
**Creator:** PIERSON, LLOYD  
**Summary Notes:** panoramic shot, ruin to right, road (with car) in center, snow covered mesa in background

---

**File Unit Nbr:** 01  
**Item Nbr:** 112541  
**Title:** Hungo Pavi 1955  
**Dates:** 1955  
**Creator:** PIERSON, LLOYD  
**Summary Notes:** Ruin from above, car on road

---

**File Unit Nbr:** 01  
**Item Nbr:** 112542  
**Title:** Chetro Kettle CCN 1956  
**Dates:** 1956  
**Creator:** PIERSON, LLOYD  
**Summary Notes:** Shot from above and behind ruin

---

**File Unit Nbr:** 01  
**Item Nbr:** 112543  
**Title:** del Arroyo CCN 1956  
**Dates:** 1956  
**Creator:** PIERSON, LLOYD  
**Summary Notes:** Distance shot, with mesa behind ruin in background

---

**File Unit Nbr:** 01  
**Item Nbr:** 112544  
**Title:** Penasco Blanco 1954  
**Dates:** 1954  
**Creator:** PIERSON, LLOYD

**Summary Notes:** Tumbled rock walls

---

**File Unit Nbr:** 01

**Item Nbr:** 112545

**Title:** BC 59 CCN Oct 54

**Dates:** Oct 1954

**Creator:** PIERSON, LLOYD

**Summary Notes:** Distance shot of ruin and surrounding road

---

**File Unit Nbr:** 01

**Item Nbr:** 112546

**Title:** Plan BC Sites

**Dates:** May 1985 (slide processing date)

**Creator:** PIERSON, LLOYD

**Summary Notes:** Plan of BC 50 and BC 51

---

**File Unit Nbr:** 01

**Item Nbr:** 112547

**Title:** Turtle Back P-I Chaco June 54

**Dates:** June 1954

**Creator:** PIERSON, LLOYD

**Summary Notes:** Close view of ruin, single 'dwelling' with walls and vertical slabs

---

**File Unit Nbr:** 01

**Item Nbr:** 112548

**Title:** Turtle Back P-I Chaco July 54

**Dates:** July 1954

**Creator:** PIERSON, LLOYD

**Summary Notes:** Small child in front of grass covered ruin

---

**File Unit Nbr:** 01

**Item Nbr:** 112549

**Title:** Kin Klizhin CCN '55

**Dates:** 1955

**Creator:** PIERSON, LLOYD

**Summary Notes:** Multi-story ruin in shadow, woman and children to left

---

**File Unit Nbr:** 01

**Item Nbr:** 112550

**Title:** Pueblo Pintado July '54

**Dates:** July 1954

**Creator:** PIERSON, LLOYD

**Summary Notes:** Ruin set at peak of low, rocky slope

---

**File Unit Nbr:** 01

**Item Nbr:** 112551

**Title:** Pueblo Pintado May 56

**Dates:** May 1956

**Creator:** PIERSON, LLOYD

**Summary Notes:** Ruin at top of rock and brush covered hill, child to right of ruin

---

**File Unit Nbr:** 01

**Item Nbr:** 112552

**Title:** Una Vida 1955

**Dates:** 1955

**Creator:** PIERSON, LLOYD

**Summary Notes:** Mesatop view of Una Vida

---

**File Unit Nbr:** 01

**Item Nbr:** 112553

**Title:** Una Vida 1955

**Dates:** 1955

**Creator:** PIERSON, LLOYD

**Summary Notes:** Very distant view of Una Vida, Fajada Butte in back left, spotty snow cover in some areas

---

**File Unit Nbr:** 01

**Item Nbr:** 112554

**Title:** Kin Ya'a CCN 1956

**Dates:** 1956

**Creator:** PIERSON, LLOYD

**Summary Notes:** Hill with single building and many stones, two observers to left of building remains on hill

---

**File Unit Nbr:** 01

**Item Nbr:** 112555

**Title:** Tsin Kletzin Chaco 1955

**Dates:** 1955

**Creator:** PIERSON, LLOYD

**Summary Notes:** Ruin on grassy horizon

---

**File Unit Nbr:** 01

**Item Nbr:** 112556  
**Title:** Kin Bineola 1955  
**Dates:** 1955  
**Creator:** PIERSON, LLOYD  
**Summary Notes:** Ruin in center of shot, blue car in distance behind ruin

---

**File Unit Nbr:** 01  
**Item Nbr:** 112557  
**Title:** Kin Kilzhin 1956  
**Dates:** 1956  
**Creator:** PIERSON, LLOYD  
**Summary Notes:** Shot centered on multi-story ruin

---

**File Unit Nbr:** 01  
**Item Nbr:** 112558  
**Title:** P. Bonito Oct 54  
**Dates:** Oct 1954  
**Creator:** PIERSON, LLOYD  
**Summary Notes:** Ruin, edge of mesa at right edge

---

**File Unit Nbr:** 01  
**Item Nbr:** 112559  
**Title:** Pueblo I/II ? Site Near Fajada Chaco  
**Dates:** Apr 1976 (slide processing date)  
**Creator:** PIERSON, LLOYD  
**Summary Notes:** Holes in floor of site

---

**File Unit Nbr:** 01  
**Item Nbr:** 112560  
**Title:** P I/II Site Chaco near Fajada  
**Dates:** Apr 1976 (slide processing date)  
**Creator:** PIERSON, LLOYD  
**Summary Notes:** Low-walled ruin, square pit in front right

---

**File Unit Nbr:** 01  
**Item Nbr:** 112561  
**Title:** Wall - Alto Chaco  
**Dates:** Apr 1976 (slide processing date)  
**Creator:** PIERSON, LLOYD  
**Summary Notes:** Ground shows impression of a buried wall

---



**File Unit Nbr:** 01  
**Item Nbr:** 112562  
**Title:** Pueblo Alto  
**Dates:** Feb 1977 (slide processing date)  
**Creator:** PIERSON, LLOYD  
**Summary Notes:** Low wall with a great deal of surrounding rock

---

**File Unit Nbr:** 01  
**Item Nbr:** 112563  
**Title:** Chaco Diorama  
**Dates:** Sep 1959 (slide processing date)  
**Creator:** PIERSON, LLOYD  
**Summary Notes:** Diorama from old Visitor Center

---

**File Unit Nbr:** 01  
**Item Nbr:** 112564A  
**Title:** C# CCN 1956  
**Dates:** 1956  
**Creator:** PIERSON, LLOYD  
**Summary Notes:** Man at desk, NPS patch on sleeve

---

**File Unit Nbr:** 01  
**Item Nbr:** 112564B  
**Title:** Busted Water Pipe Gallo GT Bean 1954  
**Dates:** 1954  
**Creator:** PIERSON, LLOYD  
**Summary Notes:** Flooded pit with broken pipe, man in water assembling scaffold

---

**File Unit Nbr:** 01  
**Item Nbr:** 112565  
**Title:** MAP BC 50/51  
**Dates:** May 1985 (slide processing date)  
**Creator:** PIERSON, LLOYD  
**Summary Notes:** Plan of BC 50 and BC 51

---

**File Unit Nbr:** 01  
**Item Nbr:** 112566  
**Title:** Chaco Map  
**Dates:** May 1985 (slide processing date)  
**Creator:** PIERSON, LLOYD  
**Summary Notes:** Map of San Juan basin

---

**File Unit Nbr:** 01  
**Item Nbr:** 112567  
**Title:** Chaco Map  
**Dates:** May 1985 (slide processing date), original post 1980  
**Creator:** (slide processing date) ||PIERSON, LLOYD  
**Summary Notes:** Map of Chaco Culture National Historical Park

---

**File Unit Nbr:** 01  
**Item Nbr:** 112568  
**Title:** Chaco - Mesa Verde Relate  
**Dates:** May 1985 (slide processing date)  
**Creator:** PIERSON, LLOYD  
**Summary Notes:** Map of San Juan Basin

---

**File Unit Nbr:** 01  
**Item Nbr:** 112569  
**Title:** Chaco Lucate / N. Mex Mod Culture  
**Dates:** May 1985 (slide processing date)  
**Creator:** PIERSON, LLOYD  
**Summary Notes:** Map of NW New Mexico

---

**File Unit Nbr:** 01  
**Item Nbr:** 112570  
**Title:** Chaco Can. Map  
**Dates:** May 1985 (slide processing date)  
**Creator:** PIERSON, LLOYD  
**Summary Notes:** Map of Chaco Culture National Historical Park

---

**File Unit Nbr:** 01  
**Item Nbr:** 112571  
**Title:** Plan - Bonito  
**Dates:** May 1985 (slide processing date)  
**Creator:** PIERSON, LLOYD  
**Summary Notes:** Map of Pueblo Bonito after extensive excavations

---

**File Unit Nbr:** 01  
**Item Nbr:** 112572  
**Title:** Fajada & Chacra M. CCN  
**Dates:** Sep 1959 (slide processing date)  
**Creator:** PIERSON, LLOYD  
**Summary Notes:** Distant shot of Mesa and Fajada Butte

---

**File Unit Nbr:** 01  
**Item Nbr:** 112573  
**Title:** Fajada CCN  
**Dates:** Sep 1959 (slide processing date)  
**Creator:** PIERSON, LLOYD  
**Summary Notes:** Distance shot centered on Fajada Butte

---

**File Unit Nbr:** 01  
**Item Nbr:** 112574  
**Title:** Above Una Vida  
**Dates:** 1955  
**Creator:** PIERSON, LLOYD  
**Summary Notes:** Panel of rock art, including anthropomorphic and zoomorphic forms as well as spirals

---

**File Unit Nbr:** 01  
**Item Nbr:** 112575  
**Title:** Cave of the Red Hands, Chaco, Aug '55  
**Dates:** Aug 1955  
**Creator:** PIERSON, LLOYD  
**Summary Notes:** Rock art consisting of a dozen red hand prints

---

**File Unit Nbr:** 01  
**Item Nbr:** 112576  
**Title:** Prehistoric Canal Kin Bineola 1956 - Apr  
**Dates:** Apr 1956  
**Creator:** PIERSON, LLOYD  
**Summary Notes:** Scrub and hill, with what might be a track or impression of a canal

---

**File Unit Nbr:** 01  
**Item Nbr:** 112577  
**Title:** Chaco Banded Masonry 1060-1080 P. Bonito 1955  
**Dates:** 1955  
**Creator:** PIERSON, LLOYD  
**Summary Notes:** Rock wall, mix of large and small stones

---

**File Unit Nbr:** 01  
**Item Nbr:** 112578  
**Title:** Slab Masonry P. Bonito 1955  
**Dates:** 1955

**Creator:** PIERSON, LLOYD  
**Summary Notes:** Rock wall with 'window' opening to right

---

**File Unit Nbr:** 01  
**Item Nbr:** 112579  
**Title:** Chetro Kettle June '54  
**Dates:** June 1954  
**Creator:** PIERSON, LLOYD  
**Summary Notes:** Shot of ruins with mesa and hills behind

---

**File Unit Nbr:** 01  
**Item Nbr:** 112580  
**Title:** Road - Chaco Pueblo Alto  
**Dates:** Apr 1976 (slide processing date)  
**Creator:** PIERSON, LLOYD  
**Summary Notes:** Empty field of scrub grass

---

**File Unit Nbr:** 01  
**Item Nbr:** 112581  
**Title:** Map - Chaco Roads  
**Dates:** May 1985 (slide processing date)  
**Creator:** PIERSON, LLOYD  
**Summary Notes:** Map of Chacoan road segments

---

**File Unit Nbr:** 01  
**Item Nbr:** 112582  
**Title:** P. Bonito Masonry Nov 54  
**Dates:** Nov 1954  
**Creator:** PIERSON, LLOYD  
**Summary Notes:** Shot of adjoining walls in Pueblo Bonito

---

**File Unit Nbr:** 01  
**Item Nbr:** 112583  
**Title:** Wood Plaque - Bonito  
**Dates:** May 1985 (slide processing date)  
**Creator:** PIERSON, LLOYD  
**Summary Notes:** Slide of a plate photograph from book depicting a wood plaque

---

**File Unit Nbr:** 01  
**Item Nbr:** 112584  
**Title:** Frog Bonito

**Dates:** May 1985 (slide processing date)  
**Creator:** PIERSON, LLOYD  
**Summary Notes:** Frog artifact, bone tool and rectangular plate

---

**File Unit Nbr:** 01  
**Item Nbr:** 112585  
**Title:** Bonito 1060-80 Wall Type CCN 1956  
**Dates:** 1956  
**Creator:** PIERSON, LLOYD  
**Summary Notes:** Rock wall

---

**File Unit Nbr:** 01  
**Item Nbr:** 112586  
**Title:** BC 50 - 51 CCN Nov 54  
**Dates:** Nov 54  
**Creator:** PIERSON, LLOYD  
**Summary Notes:** View of sites from above, with car parked within the sites.

---

**File Unit Nbr:** 01  
**Item Nbr:** 112587  
**Title:** Chetro Kettl Oct '54  
**Dates:** Oct 1954  
**Creator:** PIERSON, LLOYD  
**Summary Notes:** Distant shot of site and mesa

---

**File Unit Nbr:** 01  
**Item Nbr:** 112588  
**Title:** Chaco Diorama  
**Dates:** Sep 1959 (slide processing date)  
**Creator:** PIERSON, LLOYD  
**Summary Notes:** Diorama from Chaco visitor's center

---

**File Unit Nbr:** 01  
**Item Nbr:** 112589  
**Title:** Fajada Chaco Sept. '55  
**Dates:** Sept 1955  
**Creator:** PIERSON, LLOYD  
**Summary Notes:** Fajada butte in background, foreground with yellow flowers

---

**File Unit Nbr:** 01  
**Item Nbr:** 112590

**Title:** Goodies from Bonito  
**Dates:** May 1985 (slide processing date)  
**Creator:** PIERSON, LLOYD  
**Summary Notes:** Drinking vessels and wooden tool

---

**File Unit Nbr:** 01  
**Item Nbr:** 112591  
**Title:** Chetro Kettl ? Chaco  
**Dates:** Apr 1976 (slide processing date)  
**Creator:** PIERSON, LLOYD  
**Summary Notes:** Interior of building with floor opened up in layers for archaeological trenches.

---

**File Unit Nbr:** 01  
**Item Nbr:** 112592  
**Title:** CCN HQ Sign 1956  
**Dates:** 1956  
**Creator:** PIERSON, LLOYD  
**Summary Notes:** Chaco Canyon National Monument Headquarters Sign

---

**File Unit Nbr:** 01  
**Item Nbr:** 112593  
**Title:** Threatening Rock II Chaco Sep '55  
**Dates:** Sept 1955  
**Creator:** PIERSON, LLOYD  
**Summary Notes:** Large rock spur attached only at mesa edge

---

**File Unit Nbr:** 01  
**Item Nbr:** 112594  
**Title:** Chaco Kiva Roof  
**Dates:** Sept 1959 (slide processing date)  
**Creator:** PIERSON, LLOYD  
**Summary Notes:** Taken from interior of Kiva, light coming from gaps in roof and wall

---

**File Unit Nbr:** 01  
**Item Nbr:** 112595  
**Title:** Kin Klizhin Chaco Oct 54  
**Dates:** Oct 1954  
**Creator:** PIERSON, LLOYD  
**Summary Notes:** Site in distance under threatening clouds

---

**File Unit Nbr:** 01  
**Item Nbr:** 112596  
**Title:** CCN Mockingbird 1955 Spring  
**Dates:** Spring 1955  
**Creator:** PIERSON, LLOYD  
**Summary Notes:** Children in foreground looking at truck and large sheet metal tube in canyon

---

**File Unit Nbr:** 01  
**Item Nbr:** 112597  
**Title:** Kin Bineola 1956  
**Dates:** 1956  
**Creator:** PIERSON, LLOYD  
**Summary Notes:** Children resting underneath large, mushroom shaped rock

---

**File Unit Nbr:** 01  
**Item Nbr:** 112598  
**Title:** Fajada Jan 56  
**Dates:** Jan 1956  
**Creator:** PIERSON, LLOYD  
**Summary Notes:** Fajada butte in snowscape surrounded by low clouds

---

**File Unit Nbr:** 01  
**Item Nbr:** 112599  
**Title:** Chacra Mesa Oct 54  
**Dates:** Oct 1954  
**Creator:** PIERSON, LLOYD  
**Summary Notes:** Chacra Mesa, shadowed foreground, storm clouds center and right

---

**File Unit Nbr:** 01  
**Item Nbr:** 112600  
**Title:** PatCly 1956 CCn  
**Dates:** 1956  
**Creator:** PIERSON, LLOYD  
**Summary Notes:** Horse drawn carriage in empty plain

---

**File Unit Nbr:** 01  
**Item Nbr:** 112601  
**Title:** Kin Bineola 1956  
**Dates:** 1956  
**Creator:** PIERSON, LLOYD  
**Summary Notes:** Ruins in distance, dirt and sparse grass in foreground

---

**File Unit Nbr:** 01  
**Item Nbr:** 112602  
**Title:** Blanco June '54  
**Dates:** June 1954  
**Creator:** PIERSON, LLOYD  
**Summary Notes:** Corner of Blanco Trading Post, gasoline pump and water tank in background emblazoned with name of the trading post

---

**File Unit Nbr:** 01  
**Item Nbr:** 112603  
**Title:** Mockingbird Cut Chaco Spring 1955  
**Dates:** Spring 1955  
**Creator:** PIERSON, LLOYD  
**Summary Notes:** Sheet metal pipe lying in cut, with work crew grouped behind

---

**File Unit Nbr:** 01  
**Item Nbr:** 112604  
**Title:** Small House near Kin Bineola CCN Apr 56  
**Dates:** Apr 1956  
**Creator:** PIERSON, LLOYD  
**Summary Notes:** Remains of house on sheer hill, a great deal of rock has fallen to the base of the hill

---

**File Unit Nbr:** 01  
**Item Nbr:** 112605  
**Title:** Fajada July 1954  
**Dates:** Jul 1954  
**Creator:** PIERSON, LLOYD  
**Summary Notes:** Fajada in background, large rock in foreground, landscape very green

---

**File Unit Nbr:** 01  
**Item Nbr:** 112606  
**Title:** Kin Klizhin CCN Sept 54  
**Dates:** Sept 1954  
**Creator:** PIERSON, LLOYD  
**Summary Notes:** Ruin in middle distance along horizon, walls leaning away from each other

---

**File Unit Nbr:** 01  
**Item Nbr:** 112607  
**Title:** BC 59 CCN Oct 54



**Dates:** Oct 1954  
**Creator:** PIERSON, LLOYD  
**Summary Notes:** Ruin and surrounding road, picture taken from elevated position

---

**File Unit Nbr:** 01  
**Item Nbr:** 112608  
**Title:** Fajada Dec 1955  
**Dates:** Dec 1955  
**Creator:** PIERSON, LLOYD  
**Summary Notes:** Chacra Mesa and Fajada Butte on horizon

---

**File Unit Nbr:** 01  
**Item Nbr:** 112609  
**Title:** Fajada Oct 54  
**Dates:** Oct 1954  
**Creator:** PIERSON, LLOYD  
**Summary Notes:** Fajada Butte centered in picture, foreground shadowed

---

**File Unit Nbr:** 01  
**Item Nbr:** 112610  
**Title:** Pueblo Bonito CCN 1956  
**Dates:** 1956  
**Creator:** PIERSON, LLOYD  
**Summary Notes:** Elevated shot of site, curved outer wall at bottom edge of photo

---

**File Unit Nbr:** 01  
**Item Nbr:** 112611  
**Title:** 6 Toes P. Bonito CCN Oct 54  
**Dates:** Oct 1954  
**Creator:** PIERSON, LLOYD  
**Summary Notes:** Child staring at 6 toed rock art

---

**File Unit Nbr:** 01  
**Item Nbr:** 112612  
**Title:** Above C. Kettle 1955  
**Dates:** 1955  
**Creator:** PIERSON, LLOYD  
**Summary Notes:** Rock art, foot prints leading to anthropomorphic figure

---

**File Unit Nbr:** 01  
**Item Nbr:** 112613

**Title:** P. Bonito Ghosts CCN Oct 54

**Dates:** Oct 1954

**Creator:** PIERSON, LLOYD

**Summary Notes:** Children dressed in white robes and skull masks in front of ruin walls. One stands in doorway

---

**Collection/Series:** 0011/003  
**Series Title:** SERIES III: REPORTS

**Accession:** CHCU-00523      **Catalog Nbr:** CHCU 98233  
**Inclusive Dates:** 1949-1956      **Bulk Dates:**

**History:** FOR MORE INFORMATION SEE COLLECTION LEVEL HISTORY.

**Scope:** "A HISTORY OF CHACO CANYON NATIONAL MONUMENT," by Lloyd M. Pierson, 1956 - CHCU 85341. Originally filed in Vivian Archive: VA 726. 4 COPIES (DRAFT AND FINAL), 2 of which were cataloged in museum collection (c51480 and c85341). Second copy has black & white photos pasted into it. (500 leaves total).

"THE PREHISTORIC POPULATION OF CHACO CANYON: A STUDY IN METHODS AND TECHNIQUES OF PREHISTORIC POPULATION ESTIMATION," by Lloyd M. Pierson, 1949. UNM MA THESIS - CHCU 51481 2 COPIES, cataloged in museum collection(c51481) (150 leaves total)

Old catalog # 85341

**Provenance:** Lloyd Pierson, Chaco Canyon NM

**Series Nbr:** 003

**File Unit:** 01

**Dates:** 1956

**Title:** "History of Chaco Canyon National Monument"

**Summary Notes:**

Draft copies of Pierson's report, originally cataloged in the museum collection under c85341

---

**Series Nbr:** 003

**File Unit:** 02

**Dates:** 1956

**Title:** "History of Chaco Canyon National Monument"

**Summary Notes:**

2 copies of the final version of Lloyd Pierson's History of Chaco Canyon National Monument. Originally cataloged in the museum collection as C51480

---

**Series Nbr:** 003

**File Unit:** 03

**Dates:** 1949

**Title:** "Prehistoric Population of Chaco Canyon, New Mexico: A Study in Methods and Techniques of Prehistoric Population Estimation"

**Summary Notes:**

2 copies of Lloyd Pierson's Master's thesis at UNM. Originally cataloged in the museum collection as 51481

---

**Collection/Series:** 0011/004  
**Series Title:** SERIES IV: CORRESPONDENCE

**Accession:** CHCU-00523      **Catalog Nbr:** CHCU 98233  
**Inclusive Dates:** 1956-1963      **Bulk Dates:**

**History:** FOR MORE INFORMATION SEE COLLECTION LEVEL HISTORY.

**Scope:** Memos and letters Between Lloyd Pierson, Gordon Vivian, Albert Schroeder, and the National Archive regarding the history of Chaco Canyon. Includes a 5-page memo from Schroeder documenting his visit to the National Archives and research into the early history of Chaco Canyon, up to 1921.

Copies are duplicated on archival paper. One Memorandum, dated Oct 12, 1956 lacks a second page on non-archival paper, but is complete in the archival copies.

**Arrangement:** Chronological Order

**Provenance:** Lloyd Pierson

**Notes:** Series also includes archival copies of all material

**Series Nbr:** 004

**File Unit:** 01

**Dates:** May 17, 1956 and June 7, 1956

**Title:** Letter to National Archives regarding a letter by Electus Backus written by Albert Schroeder and reply

**Summary Notes:**

Inquiry regarding early history of Chaco Canyon. National Archive had no information non the subject. Also included is a memo forwarding the letters to the Superintendent

---

**Series Nbr:** 004

**File Unit:** 02

**Dates:** Oct 12, 1956

**Title:** Memo between Schroeder and Vivian, with Vivian's response added to original memo

**Summary Notes:**

Memo regarding 'information' Vivian may have (and does not) regarding Chaco before 1860. Vivan's notes carried on to the back of the page, but was not carried over on this photocopied. Back page included as a second page photocopied from archival versions also included in the file.

---

**Series Nbr:** 004

**File Unit:** 03

**Dates:** 11/21/1956

**Title:** Memo from Schroeder regarding William Keleher's book

**Summary Notes:**

Summarizes information on a Chaco expedition in 1849 - the Washington Expedition

---

**Series Nbr:** 004

**File Unit:** 04

**Dates:** 11 Jan 1957

**Title:** Memo: Chaco Canyon History

**Summary Notes:**

Memo from Pierson to Albert Schroeder on material from the national archives. References information on Wetherill, Snerdly, Hewett and the monument founding.

---

**Series Nbr:** 004

**File Unit:** 05

**Dates:** Jan 7, 1957

**Title:** Memo: Area History Data - Chaco Canyon

**Summary Notes:**

Summary of Albert Schroeder's research trip to Washington, DC and the National Archives

---

**Series Nbr:** 004

**File Unit:** 06

**Dates:** Sept 18, 1963 and Sept 23, 1963

**Title:** Memo: Yellow House

**Summary Notes:**

Memo and reply between Gordon Vivian and Lloyd Pierson regarding history of excavations at Yellow House

---

**Collection/Series:** 0011/005  
**Series Title:** SERIES V: MAPS

**Accession:** CHCU-00605      **Catalog Nbr:** CHCU 98233  
**Inclusive Dates:**      **Bulk Dates:**

**History:** FOR MORE INFORMATION SEE COLLECTION LEVEL HISTORY.

**Scope:** MAPS CATALOGUED SEPARATELY

CHCU 55376 CHCU 55377 CHCU 55130



**Series Nbr:** 005

**File Unit:** 01

**Dates:** 1947

**Title:** Location of BC Sites on General Development Plan Topographic Map

**Summary Notes:**

---

**Series Nbr:** 005

**File Unit:** 02

**Dates:** 1947

**Title:** Location of BC sites on Topography, w/ enlarged inset of S. Gap Sites (pasted on)

**Summary Notes:**

---

**Series Nbr:** 005

**File Unit:** 03

**Dates:** 1940

**Title:** Topographic Base Map

**Summary Notes:**

Drafted from 1934 aerials

---