



National Park Service
U.S. Department of the Interior

Buffalo National River

402 North Walnut
Suite 136
Harrison, Arkansas

870-365-2700 phone
870-365-2701 fax

Buffalo National River Press Release

June 22, 2010

For Immediate Release

Contact: Caven Clark, Public Information Officer

Phone: 870/365-2792

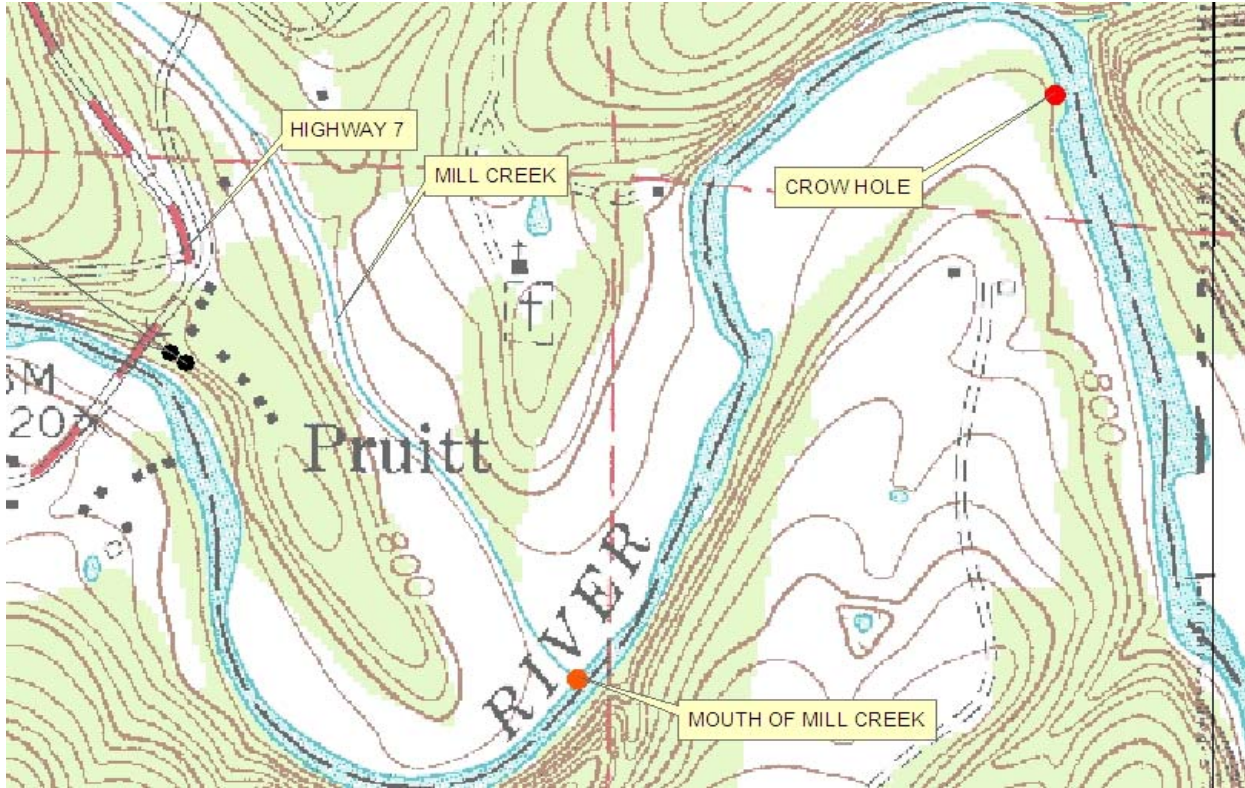
MILL CREEK SEWAGE CONTINUES TO PRESENT HEALTH RISKS

Health concerns remain regarding bacteria concentrations in Mill Creek, a tributary of the Buffalo River in Newton County, Arkansas, following a breakdown in a local septic system in January of 2009. The Marble Falls temporary lift station continues in operation while funding is sought to repair or replace the system. Buffalo National River is continuing to take water samples in the affected area. Because the results of these samples are not known until 24 hrs after the sample is taken, the National Park Service is posting health advisory signs to alert the public to possible risk in the affected area. The affected area includes Mill Creek and the Buffalo River from the mouth of Mill Creek to approximately one quarter mile downstream from Crow Hole. Signs will be removed when the health risk factors are resolved.

State standards for bacteria in recreational waters have been and can be expected to continue to be exceeded after periods of high rainfall. These events may result in the concentration of bacteria in the affected area increasing the risk to health, particularly for activities involving direct contact with the water. Canoeing between Pruitt and Hasty is safe and recreational activities in all other areas of Buffalo National River are not affected. BNR does not expect this condition to have significant impact on the overall visitation and recreational use of the park since swimming and other similar recreational activities can easily be redirected to other locations along the river.

For further information or the latest bacteria readings please call 1-888-692-1162.

Affected area is Mill Creek, mouth of Mill Creek downstream at least as far as Crow Hole.



Buffalo National River
Arkansas

National Park
U. S. Department of the Interior

**** Water Quality Alert ****

This water is contaminated by untreated waste. Unsafe levels of bacteria and other pathogens may be present. Concentrations of bacteria in the water can change daily and are dependent upon changes in flow and the amount of waste entering the system.

For further information or the latest bacteria readings please call 1-888-692-1162 or visit <http://www.nps.gov/buff>.

-NPS-

EXPERIENCE YOUR AMERICA

The National Park Service cares for special places saved by the American people so that all may experience our heritage.