

## Flies (Diptera)



Greenhead fly  
*Tabanus nigrovittatus* 10mm



Robber fly  
*Albibarbefferia albibarbis* 19mm



Common green bottle fly  
*Lucilia sericata* 9mm



Drone fly  
*Eristalis tenax* 13mm



Fungus gnat  
*Mycetophila fisherae* 4mm



Long-legged fly  
*Condylostylus sp.* 3mm

## Terrestrial Snails & Slugs (Gastropoda)



Brown-lipped snail\*  
*Cepaea nemoralis* 22mm



Glossy pillar snail  
*Cochlicopa lubrica* 6mm



Dusky arion slug\*  
*Arion subfuscus* 50mm

## Bees, Wasps, & Ants (Hymenoptera)



Common Eastern bumble bee  
*Bombus impatiens* 13mm



Honey bee\*  
*Apis mellifera* 12mm



Eastern yellowjacket  
*Vespa maculifrons* 12mm



Ichneumonid wasp  
*Ichneumon annulatorius* 14mm



Carpenter ant  
*Camponotus pennsylvanicus* 9mm



Eastern carpenter bee  
*Xylocopa virginica* 19mm



Sweat bee  
*Agapostemon virescens* 11mm



Bald-faced hornet  
*Dolichovespula maculata* 17mm



Sand wasp  
*Bembix americana* 15mm



Pavement ant\*  
*Tetramorium caespitum* 3mm

## Butterflies & Moths (Lepidoptera)



Cabbage white butterfly\*  
*Pieris rapae* 43mm



Orange sulphur butterfly  
*Colias eurytheme* 50mm



Ailanthus webworm  
*Atteva punctella* 25mm



Isabella tiger moth  
*Pyrrharctia isabella* 60mm



Monarch butterfly  
*Danaus plexippus* 100mm



Least skipper  
*Ancyloxypha numitor* 24mm



Tobacco hornworm moth  
*Manduca sexta* 115mm



Woolly bear caterpillar  
up to 55mm

ADULT *Pyrrharctia isabella* JUVENILE

\*Species not native to eastern North America

Measurement represents the average body length or wing span of the species at maturity

This is just a small sample of common invertebrates (animals without backbones) we have discovered in our All Taxa Biodiversity Inventory (ATBI) - see <http://www.bostonharborislands.org/nature>, [http://insects.oeb.harvard.edu/boston\\_islands/](http://insects.oeb.harvard.edu/boston_islands/), or <http://www.biocaribe.org> for more information.

All invertebrate images © 2011  
The President and Fellows of Harvard College



A NATIONAL PARK AREA  
**BOSTON HARBOR ISLANDS**  
minutes away. worlds apart.



**Creatures of the microwilderness**

...bugs, slugs, and other spineless animals in the Boston Harbor Islands national park area

### Millipedes (Diplopoda)



13mm  
Beach millipede  
*Thalassiosobates littoralis*



24mm  
Julid millipede\*  
*Cylindroiulus caeruleocinctus*

### Spiders (Araneae)



13mm  
Woodlouse hunter\*  
*Dysdera crocata*



13mm  
European garden spider\*  
*Araneus diadematus*

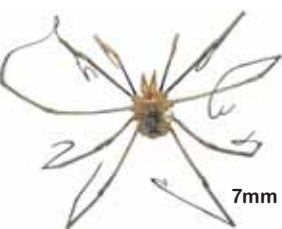


11mm  
Funnel web spider  
*Agelenopsis potteri*

### Centipedes (Chilopoda)



25mm  
Brown centipede\*  
*Lithobius forficatus*



7mm  
Daddy long-legs\*  
*Phalangium opilio*

### Earwigs (Dermaptera)



25mm  
Maritime earwig\*  
*Anisolabis maritima*

### Beetles (Coleoptera)



9mm  
Colorado potato beetle\*  
*Leptinotarsa decemlineata*



13mm  
Ground beetle  
*Pterostichus mutus*



12mm  
Red milkweed beetle  
*Tetraopes tetropthalmus*



17mm  
American carrion beetle  
*Necrophila americana*



14mm  
Click beetle  
*Melanotus similis*



6mm  
Multi-colored Asian lady beetle\*  
*Harmonia axyridis*



9mm  
Asiatic garden beetle\*  
*Maladera castanea*



9mm  
Black firefly  
*Lucidota atra*



8mm  
Acorn weevil  
*Curculio pardalis*



13mm  
Rove beetle  
*Platydracus cinnamopterosus*

### Scorpionflies (Mecoptera)



11mm  
Common scorpionfly  
*Panorpa rufescens*

### Dragonflies (Odonata)



73mm  
Common green darner  
*Anax junius*

### Grasshoppers, Crickets, & Katydid (Orthoptera)



15mm  
Snowy tree cricket  
*Oecanthus fultoni*



24mm  
Red-legged grasshopper  
*Melanoplus femurrubrum*

### Lacewings (Neuroptera)



15mm  
Golden-eyed lacewing  
*Chrysopa oculata*

### Mantids (Mantodea)



55mm  
European mantis\*  
*Mantis religiosa*



18mm  
Fall field cricket  
*Gryllus pennsylvanicus*



20mm  
Slender meadow katydid  
*Conocephalus fasciatus*

### True Bugs & Hoppers (Hemiptera)



7mm  
Candy-striped leafhopper  
*Graphocephala coccinea*



9mm  
Banasa stink bug  
*Banasa dimidiata*



11mm  
Small milkweed bug  
*Lygaeus kalmii*

### Sowbugs & Pillbugs (Isopoda)



17mm  
Common rough woodlouse\*  
*Porcellio scaber*



9mm  
Ambush bug  
*Phymata pennsylvanica*



7mm  
Plant bug  
*Stenodema trispinosa*

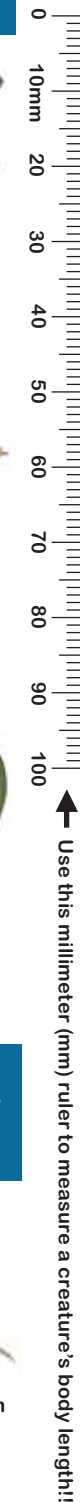


5mm  
Two-lined planthopper  
*Acanalonia bivittata*

### Beach hoppers (Amphipoda)



17mm  
Beach hopper  
*Orchestia grillus*



Use this millimeter (mm) ruler to measure a creature's body length!