

**BISCAYNE BAY - CARD SOUND  
LOBSTER SANCTUARY**

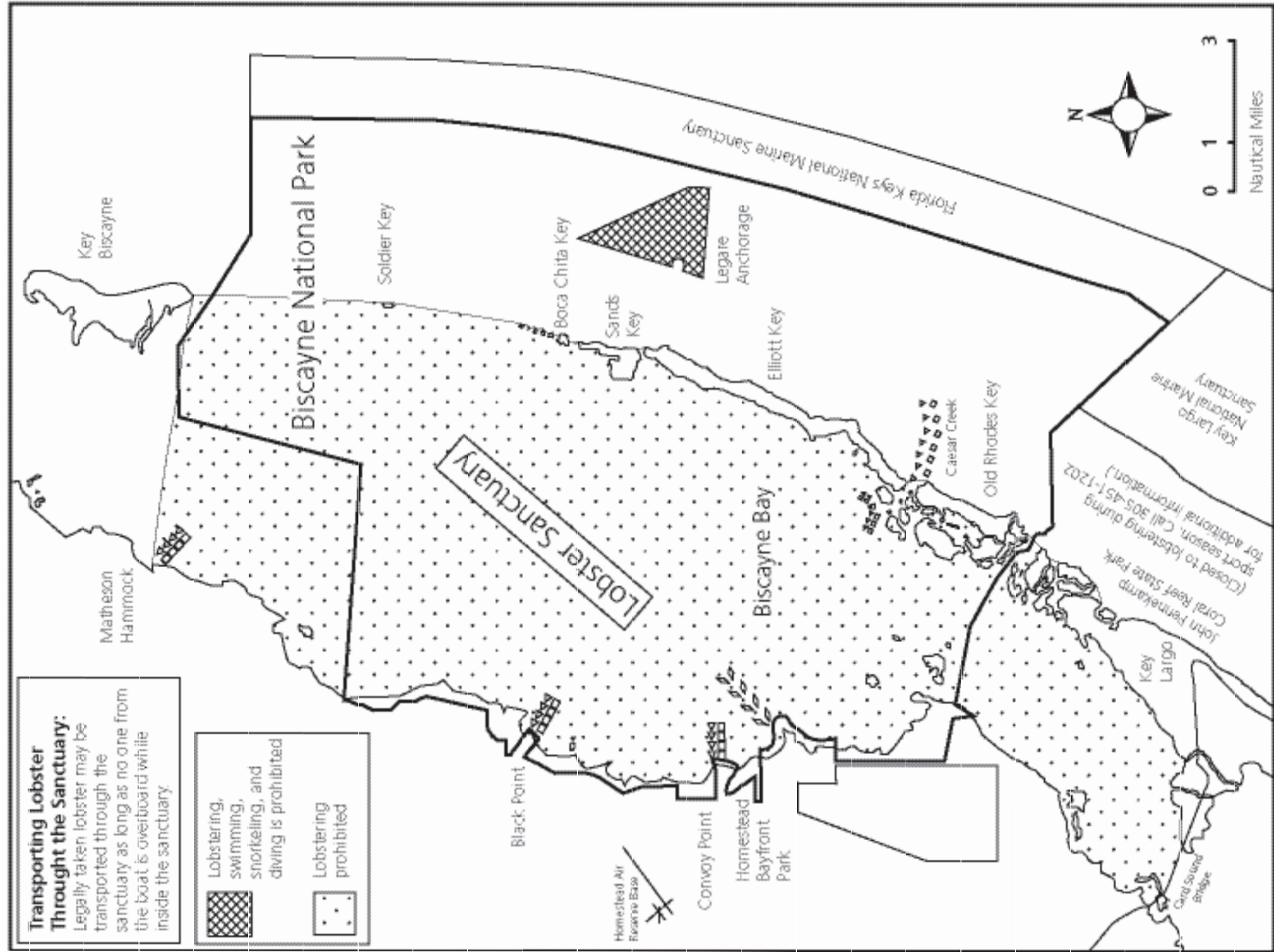
THE TAKING OF LOBSTER IS PROHIBITED AT ANY TIME OF THE YEAR in Biscayne Bay-Card Sound Lobster Sanctuary. The sanctuary boundary extends from the northern edge of Matheson Hammock Park east to the southern tip of Cape Florida (Key Biscayne). From Cape Florida it runs south to Soldier Key then along the eastern high water line of Soldier Key, the Ragged Keys, Boca Chita Key, Sands Key, Elliott Key, Old Rhodes Key, Swan Key, Palo Alto Key, and Angelfish Key to the southern edge of Pumpkin Creek. It turns north and then south, running along the high water line of Key Largo, following the western shore of Pumpkin Creek, the southern shores of Angelfish Creek and Little Pumpkin Creek, and the eastern edge of Card Sound to the Card Sound Bridge. From the Card Sound Bridge it runs north along the western high water lines of Little Card Sound, Card Sound, and Biscayne Bay to the northern boundary of Matheson Hammock Park.

All natural, artificial, and tidal creeks between the islands and along the mainland are included in the Sanctuary and are closed to lobstering.

Lobsters may be taken east of the islands during the legal seasons, except in the Legare Anchorage (see map) where swimming, snorkeling, or diving is prohibited year round.

Legally taken lobsters may be transported through the Sanctuary as long as no one from the boat is overboard (in the water) while inside the Sanctuary.

Florida State laws pertaining to the harvesting of spiny lobster apply to all areas within Biscayne National Park. Regulations may differ in waters surrounding the Park. Contact the appropriate agencies for regulations in these areas.

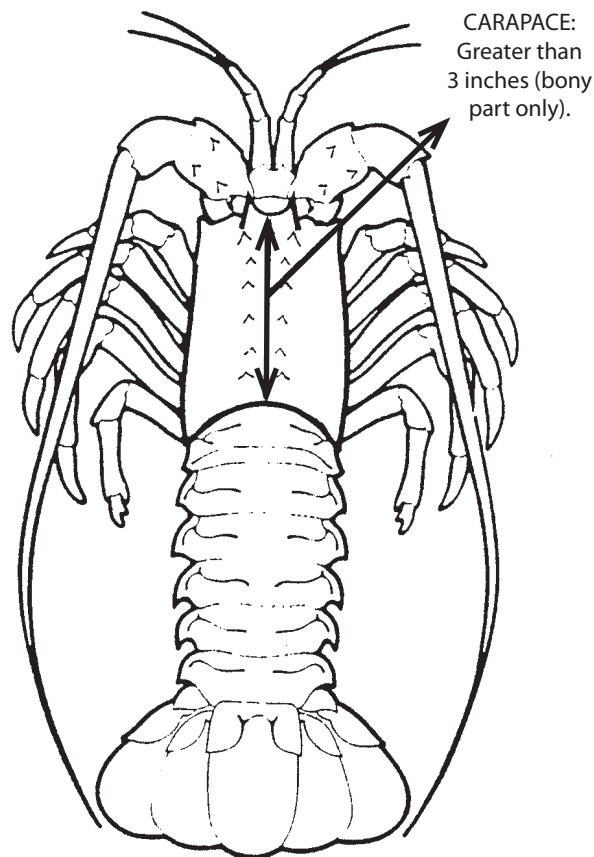


## HOW TO MEASURE

A measuring device must be utilized when harvesting spiny lobsters. Each person in the water must have a measuring device with them. **MEASUREMENTS MUST BE MADE BEFORE THE LOBSTER IS REMOVED FROM THE WATER.**

The **CARAPACE** is the front or head and body section of the lobster.

When measuring, begin at the front edge of the bony part between the horns (does not include the softer portion between the eyes). Proceed along the middle of the back to the rear edge of the top part of the carapace. Measurements pertain only to the carapace length. **TAIL MEASUREMENTS ARE NOT VALID.**



## FEMALES

Any egg-bearing females, regardless of size, must be immediately returned to the water unharmed. Eggs are found on the underside of the tail and appear as orange, berry-like formations. Eggs must not be removed or molested.

## SIZE

Lobsters that are kept must have a carapace length of more than 3 inches, measured in the water. Undersized lobster must be immediately released unharmed. **ALL LOBSTERS MUST BE IN WHOLE CONDITION UNTIL RETURNED TO THE MAINLAND.** "Wringing" or separating the tail from the body is prohibited in Park waters. Possession of "wrung" or separated tails in or on the Park's waters is prohibited. Regulations are enforced on and off the water.

## DIVING/SNORKELING

State law requires the prominent display of a diver-down flag when diving or snorkeling.

The dive flag must be 20" x 24" when displayed from a vessel.

The dive flag must be prominently displayed from the highest point on vessel and visible from 360° degrees. Divers must stay within 300 feet of dive flag in open water, and within 100 feet in rivers, inlets and narrow channels.

It is prohibited for anyone to dive or snorkel in, or within 100 feet of any marked channel within Biscayne National Park or in any harbor within the park.

Vessels within 300 feet of a dive flag in open waters or within 100 feet in rivers, inlets and narrow channels must operate at idle speed.

To report a violation of law within Biscayne National Park or for emergency assistance call 305-242-7740 or #NPS

## BISCAYNE NATIONAL PARK LOBSTER SEASONS & BAG LIMITS for 2009

**2-DAY SPORT SEASON**  
Wednesday and Thursday,  
July 29 & 30, 2009  
6 lobster per person per day.

**REGULAR SEASON**  
August 6, 2009 – March 31, 2010  
6 lobster per person per day.

For information on recreational regulations outside of Biscayne National Park contact Florida Fish and Wildlife Conservation Commission at 850-488-6058, or visit [www.marinefisheries.org](http://www.marinefisheries.org)

## LICENSE REQUIREMENTS

The harvest of lobster in Biscayne National Park is in accordance with state fishing regulations. A recreational saltwater license and a crawfish permit are required for harvest. For more information or to purchase by phone call 1-888-347-4356.

## METHODS

Lobsters may only be taken using hands, hand-held nets, bully nets, or other means which permit the lobsters to be released unharmed if not legal size. **USE OF GRAINS, SPEARS, GRABS, HOOKS, OR SIMILAR DEVICES IS PROHIBITED.** Traps may not be used without a permit from the Florida Fish and Wildlife Conservation Commission.

For further information on lobstering or diving in Biscayne National Park call 305-230-7275 or visit [www.nps.gov/bisc/lobster.htm](http://www.nps.gov/bisc/lobster.htm)

Biscayne National Park

National Park Service  
U.S. Department of the Interior



# LOBSTERING 2009



# IN BISCAYNE NATIONAL PARK

The National Park Service cares for special places saved by the American people so that all may experience our heritage.