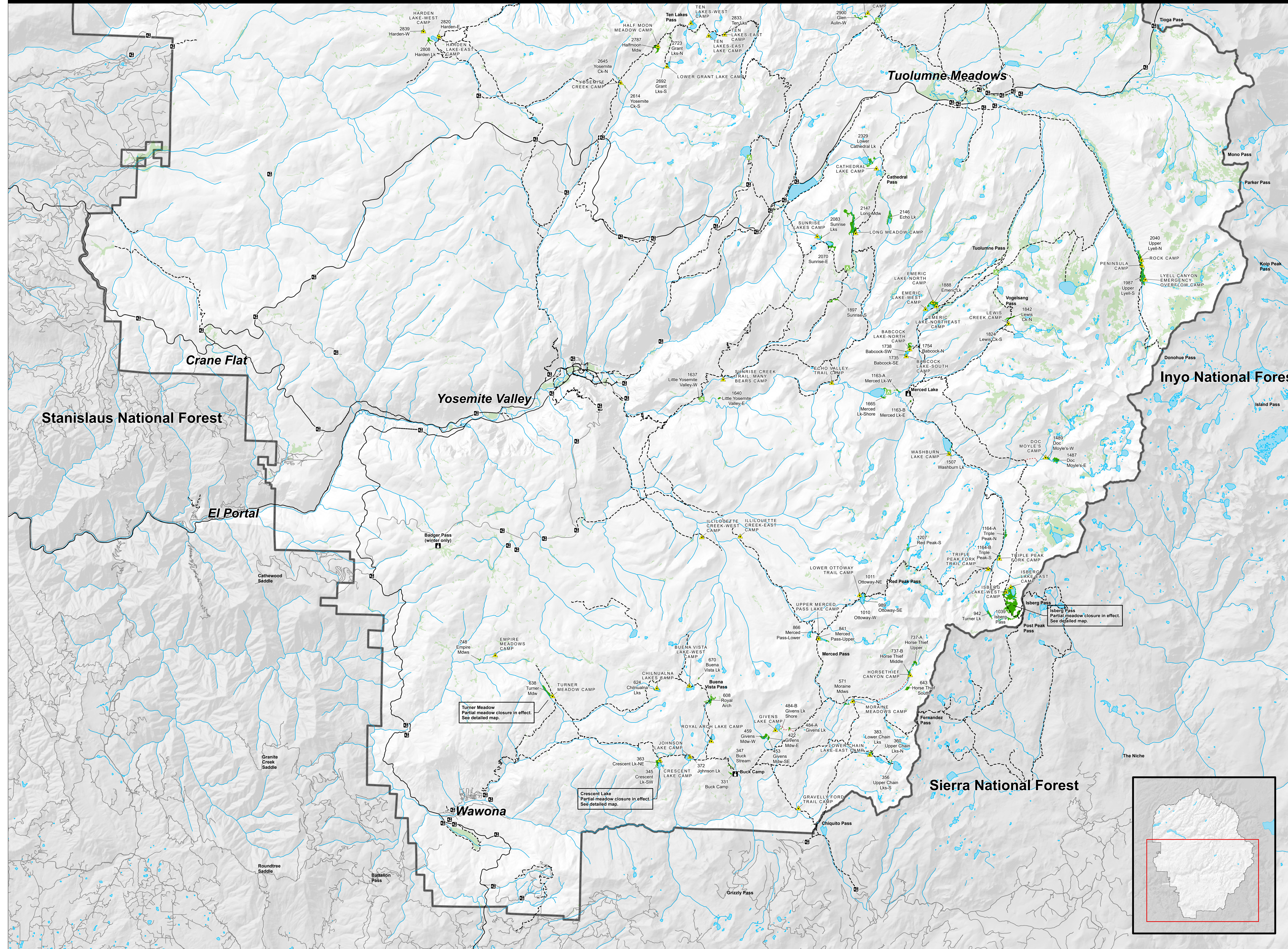


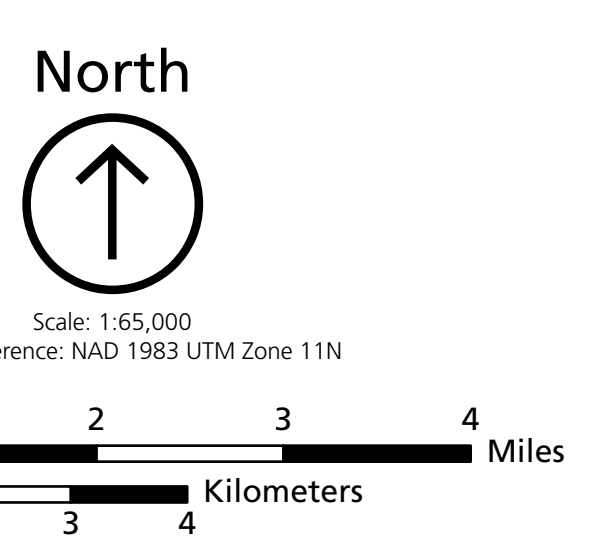
# 2023 Stock Use and Grazing Regulations, Yosemite National Park South



Turner Meadow  
Partial meadow closure in effect.  
See detailed map.

Crescent Lake  
Partial meadow closure in effect.  
See detailed map.

Isberg Pass  
Partial meadow closure in effect.  
See detailed map.



- Map Features**
- Stock Camp
  - High Sierra Camp
  - Stock Route
  - National Park
  - Trailhead
  - Ranger Station
  - Meadows Associated with Stock Camps
  - Trail

- Interpreting stock camp and meadow labels**
- ROCK CAMP → Use the stock camp name to report use.
  - 2040 → Use the meadow number to report grazing use.
  - Upper Lyell-N → The name of the meadow may be abbreviated.

This map is intended for use in conjunction with detailed maps on the Yosemite Stock Use webpage. <https://www.nps.gov/yose/plan/yourvisit/stock.htm>

Any person using the information presented here is responsible to comply with all park regulations, including meadow closures, access routes, and permitted campsites shown on detailed maps for the vicinity of each stock camp.

Additional information regarding opening dates, closures, and grazing capacity for each meadow can be found on the park website or by calling the Yosemite National Park Wilderness Office at (209) 372-0826.

Produced by YOSE Plant Ecology  
Revised: 11/1/2022

