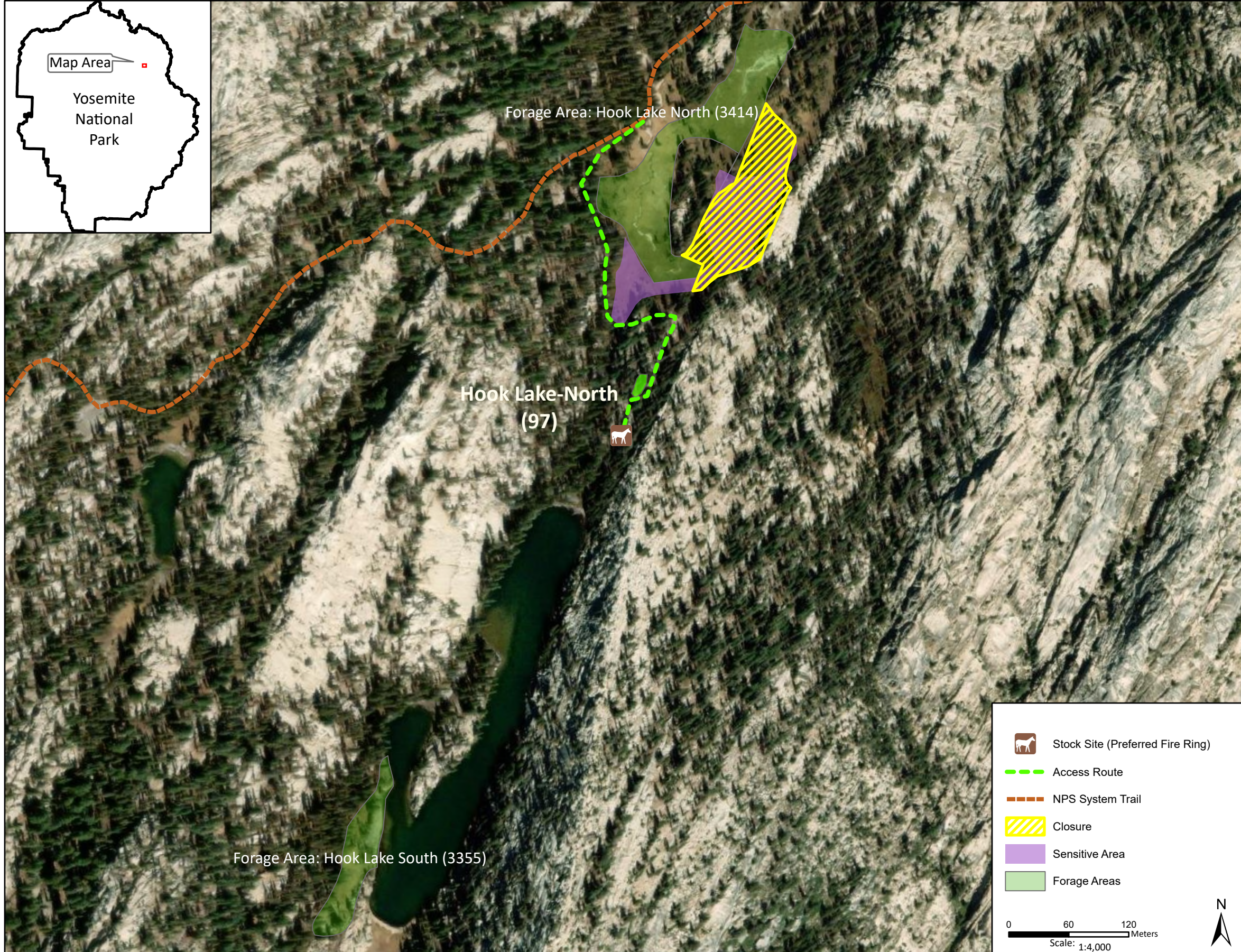
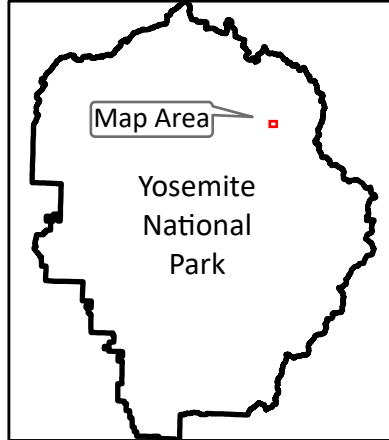


# Stock Site Evaluation Project

## Hook Lake - North

Yosemite National Park  
California

National Park Service  
U.S. Department of the Interior



Forage Area: Hook Lake North (3414) - the large meadow north of the lake and Hook Lake South (3355) - the smaller meadow on the southwest side of the lake.

There are multiple sensitive resources in these areas. Grazing here may also have an increased potential impact to the ecosystem given the elevation of the area (9,400 feet). In consideration of these issues, it is recommended that sites at Hook Lake be used primarily as drop camps, that operators bring supplemental feed, or use the meadows for minimal grazing. If grazing is planned, keep animals out of the sensitive resource areas shown on the map.

Annual Grazing Capacity: 16 stock use nights

### Hook Lake-North

Camp ID: 97

Fire Ring: 288,599mE x 4,208,154mN

Handling Practices: Preferred use as drop camp only. Use access route that passes along western edge of meadow. The unloading area is next to the fire ring. The holding area is 40 m down the slope north of the fire ring.

- Stock Site (Preferred Fire Ring)
- Access Route
- NPS System Trail
- Closure
- Sensitive Area
- Forage Areas

0 60 120 Meters  
Scale: 1:4,000