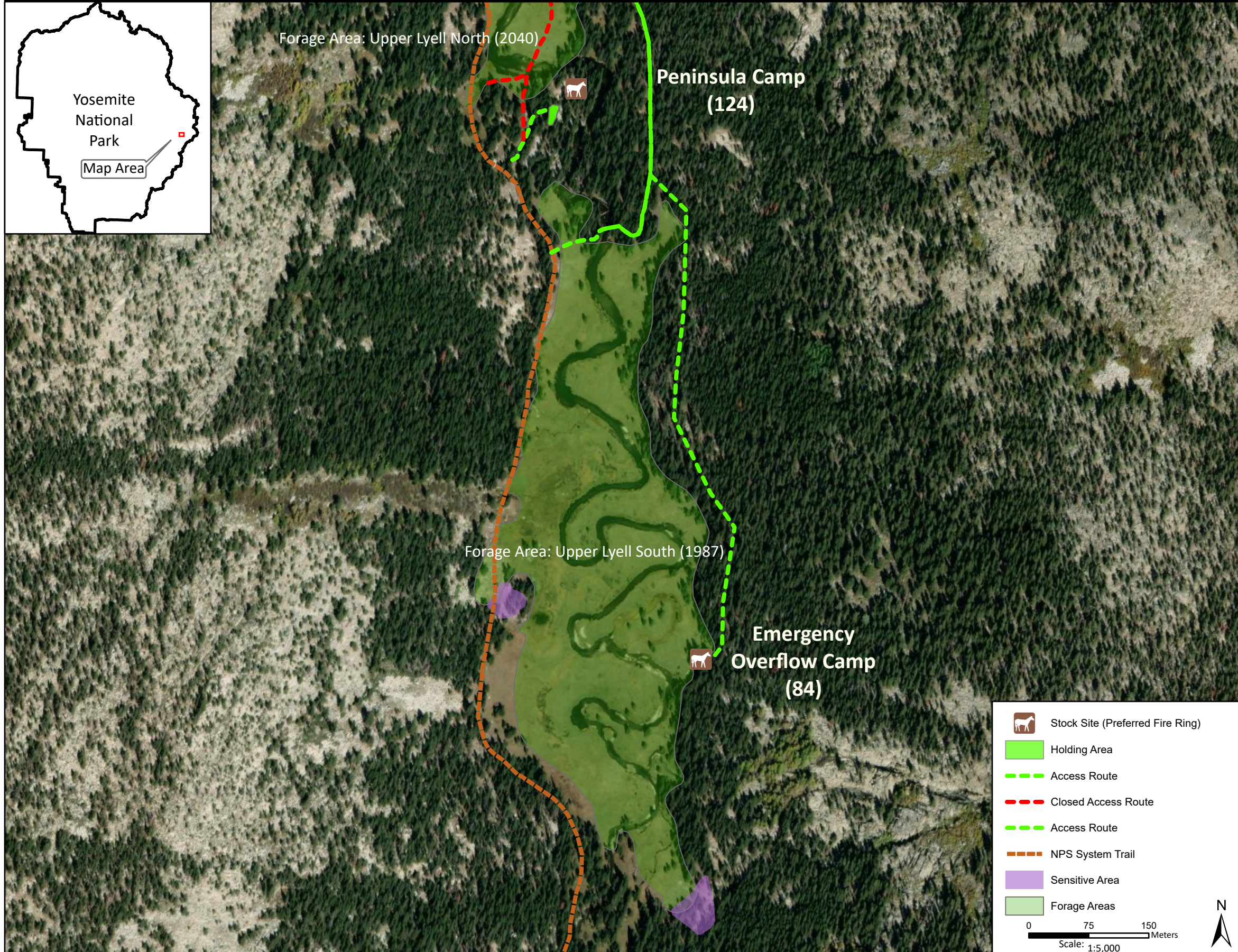
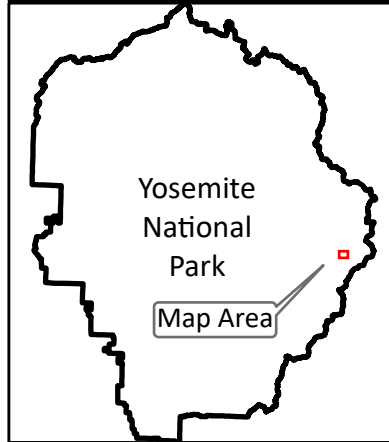


Stock Site Evaluation Project
Lyell Canyon - Emergency Overflow Camp

Yosemite National Park
 California

National Park Service
 U.S. Department of the Interior



Forage Area: Upper Lyell South (1987) - Meadows along both sides of the river and surrounding understory. The stream crossing to access Rock Camp and the Emergency Overflow Camp was moved and restored in 2014; the newly armored stream crossing is located at the north end of the upper meadow. Though slightly longer, this route is designed to keep stock groups from crossing the river at the old deteriorated crossing.

Annual Grazing Capacity: 188 stock use nights

Lyell Canyon - Emergency Overflow Camp

Camp ID: 84

Fire Ring: 301,025mE x 4,185,319mN

Handling Practices: The access route uses follows the same route that is south of Peninsula Camp to cross the river. Head south on the old Cavalry trail on the east side of the river for approximately 600 m to the fire ring, which is located in a group of lodgepole pines on the edge of the meadow. This lengthy route is designed to keep stock groups from crossing the river in unstable bank areas and to keep groups out of wet meadow areas. The unloading area is at the fire ring. A preferred holding area has not been established, but do not hold stock in meadow areas. Exit the site by following the same access route.