

# Stock Site Evaluation Project Tiltill Valley Trail Camp

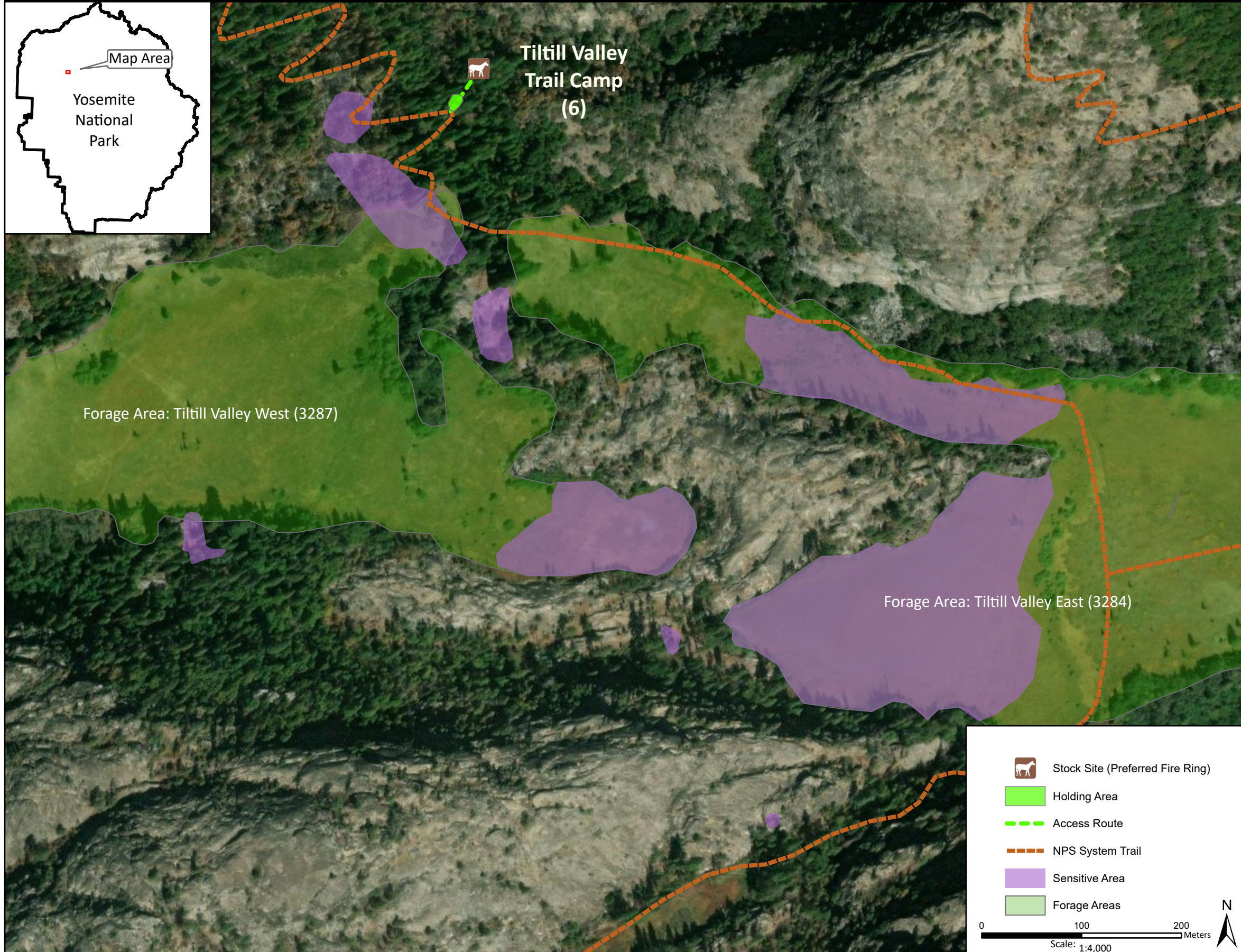
Yosemite National Park  
California

National Park Service  
U.S. Department of the Interior



Forage Area: Tiltill Valley West (3287) and Tiltill Valley East (3284) - Tiltill Valley Meadows and the surrounding understory can be used for grazing.

Annual Grazing Capacity: 90 stock use nights



## Tiltill Valley Trail Camp

Camp ID: 6

Fire Ring: 263,072mE x 4,206,753mN

Handling Practices: The access route starts at the second switchback leading up out of Tiltill Valley and heads northeast 50 m to the fire ring. The unloading area is at the fire ring. The holding area is close to the NPS system trail. Do not camp or hold stock west or south of the NPS system trail, due to concerns about stock use causing potential impacts to the sensitive resources in this area.