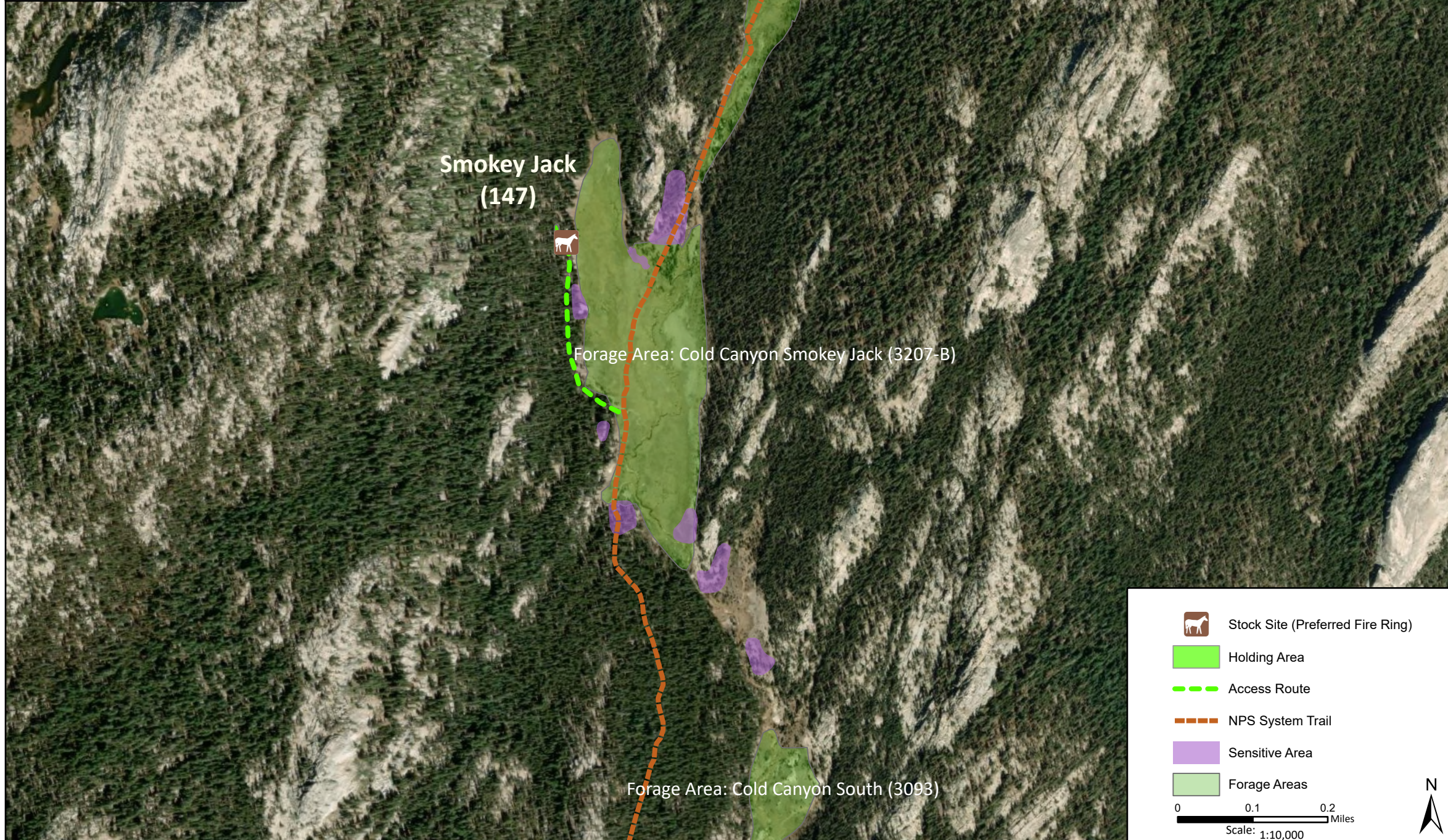
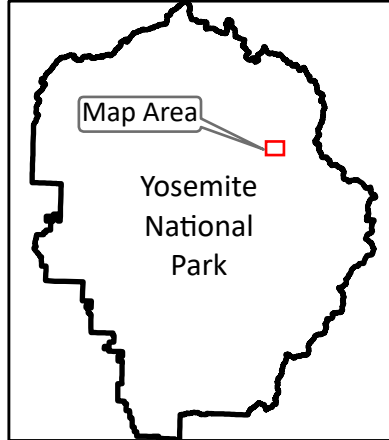


Stock Site Evaluation Project Cold Canyon - Smokey Jack

Yosemite National Park
California

National Park Service
U.S. Department of the Interior



Forage Area: Cold Canyon North (3207-A), Cold Canyon Smokey Jack (3207-B), and Cold Canyon South (3093) - There is a large meadow east of the site and more meadow areas north and south along the trail.

Annual Grazing Capacity: 85 stock use nights

Smokey Jack

Camp ID: 147

Fire Ring: 288,539mE x 4,203,962mN

Handling Practices: This site is located on the west side of the Smokey Jack meadow along the Pacific Crest Trail in Cold Canyon. The access route starts where a small intermittent drainage crosses the trail in the meadow. The route travels north through the forest along the west edge of the meadow for approximately 0.25 mile to the fire ring. The site is located approximately 130 m north of a prominent overhanging boulder at the edge of the meadow. The unloading area is at the fire ring and the holding area is 30 m northwest of the fire ring.