

# Stock Site Evaluation Project Kerrick Canyon-PCT/Bear Valley Trail Junction

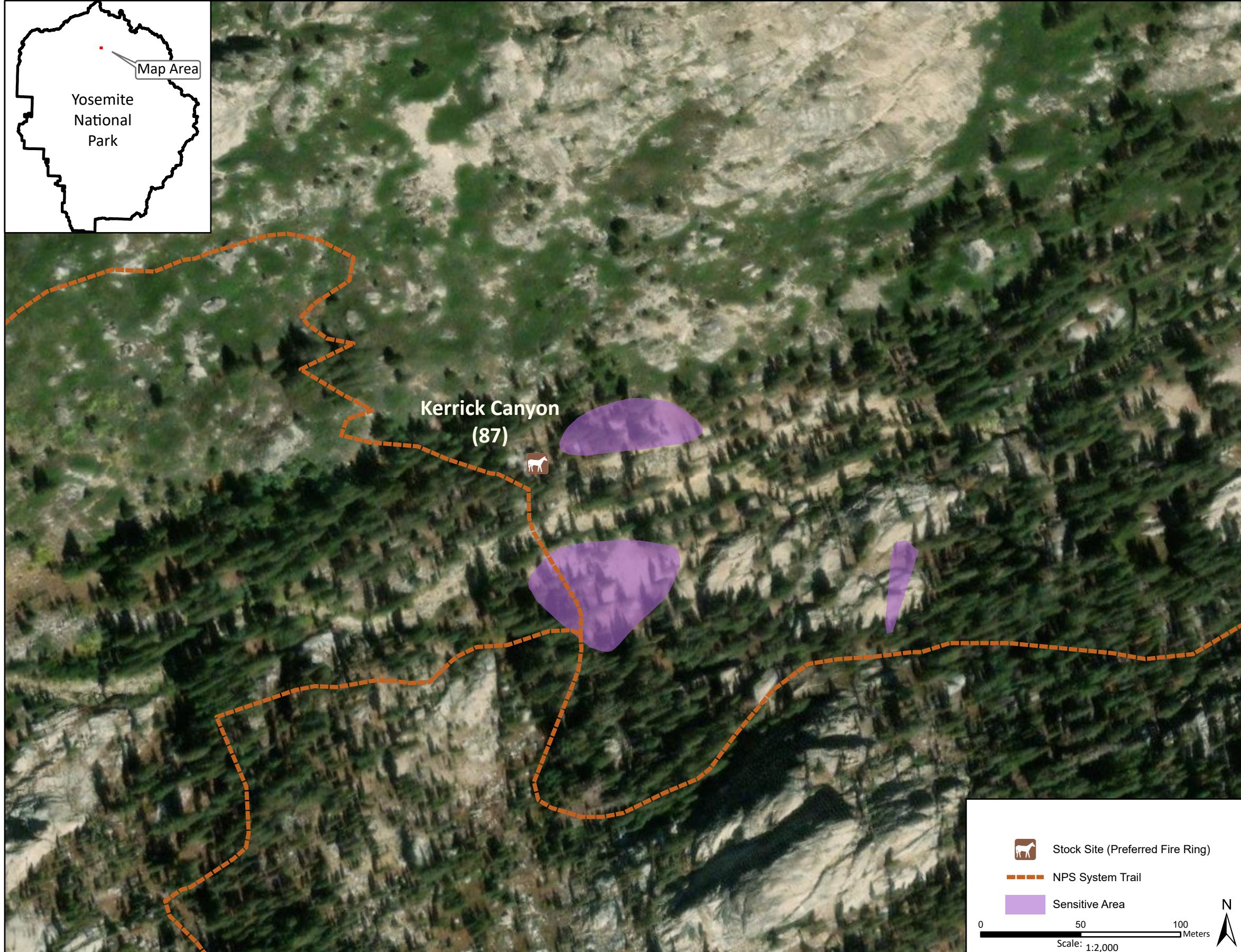
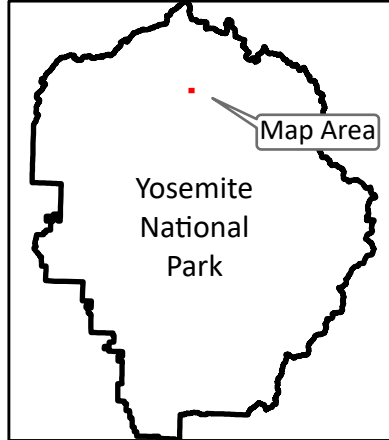
Yosemite National Park  
California

National Park Service  
U.S. Department of the Interior



Forage Area: There is very limited understory forage at the site and surrounding areas.

Annual Grazing Capacity: 50 stock use nights



## Kerrick Canyon

Camp ID: 87

Fire Ring: 274,219mE x 4,213,990mN

Handling Practices: This site is located at the west end of Kerrick Canyon. The fire ring is southwest of the trail approximately 40 m northwest of the creek crossing. The unloading area and holding area are at the fire ring. Do not hold stock east of the trail or south of the creek due to concerns about stock use causing potential impacts to sensitive resources in the area.