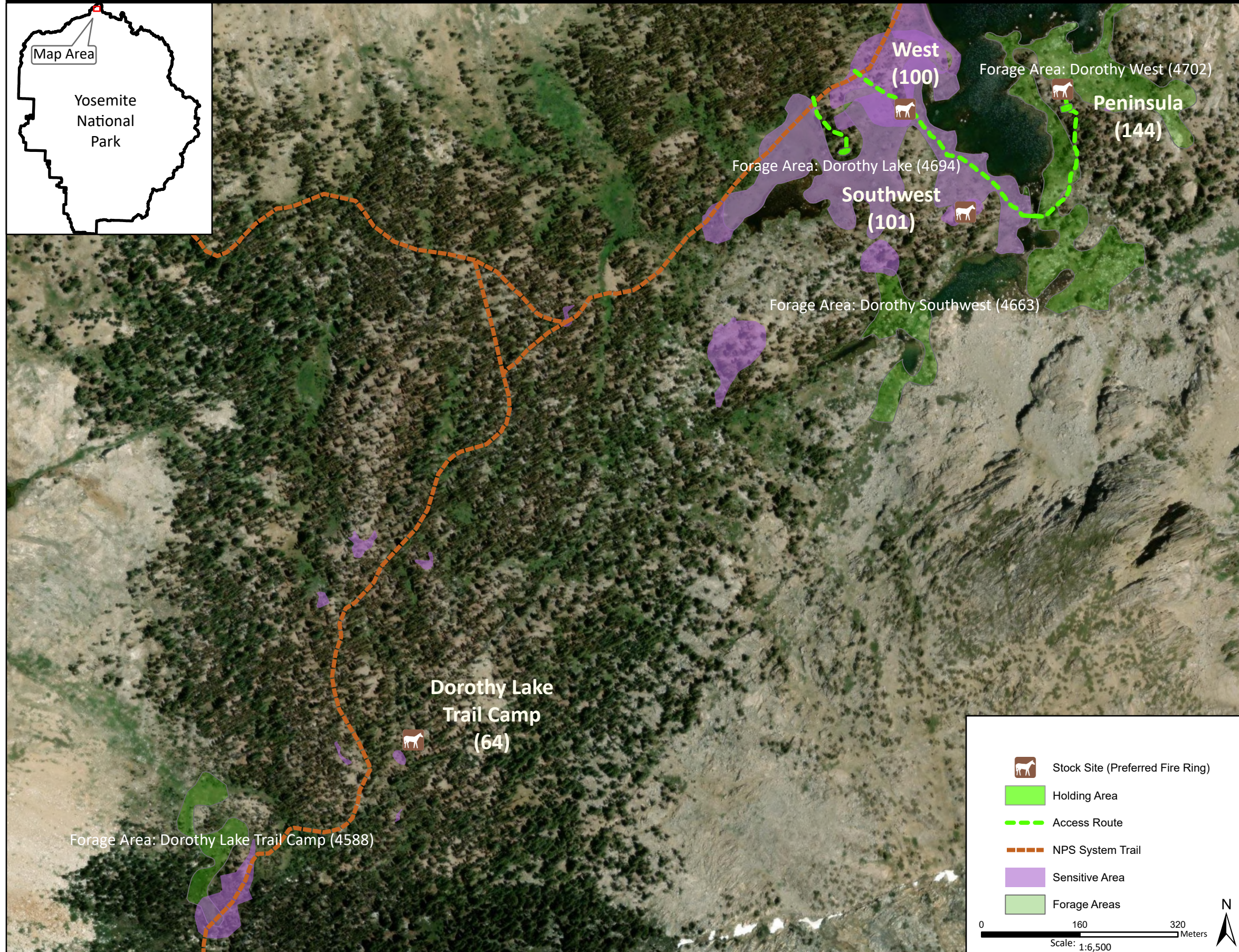
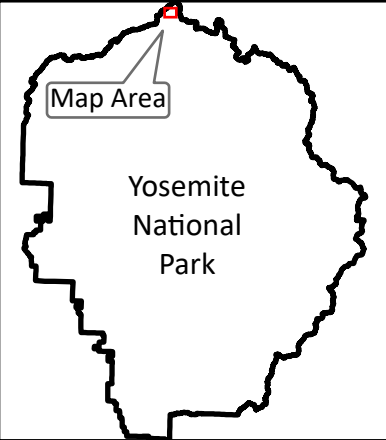


**Stock Site Evaluation Project**  
**Dorothy Lake Trail Camp**

Yosemite National Park  
 California

National Park Service  
 U.S. Department of the Interior



	Stock Site (Preferred Fire Ring)
	Holding Area
	Access Route
	NPS System Trail
	Sensitive Area
	Forage Areas

0 160 320 Meters  
 Scale: 1:6,500

Forage Area: , Dorothy Lake Trail Camp (4588) - The forage area for this site has not been investigated, though it is suspected that there is very limited understory forage in this area and one meadow is visible the aerial photography.

Annual Grazing Capacity: 12 stock use nights

**Dorothy Lake Trail Camp**

Camp ID: 64  
 Estimated Location: 271,953mE x 4,227,235mN  
 Handling Practices: This site location has not been verified. It was included in the list of Operator Specified stock sites, but no stock use has been documented here. The suspected site location is east of a small tributary of Falls Creek, but is west of Falls Creek itself. The access route is undefined. Stock groups should find an established fire ring that is not within the sensitive resource areas indicated on the map, due to concerns about stock use causing potential impacts. Stock should be held in previously disturbed areas close to the trail.